

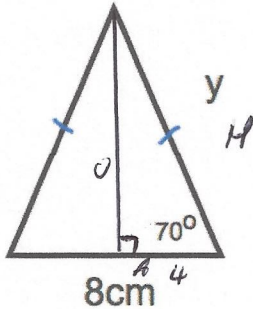
30th May



Corbettmaths

Simplify $4\sqrt{3} \times 2\sqrt{5}$

$$8\sqrt{15}$$



CAH

Calculate y

$$y = \frac{4}{\cos 70}$$

$$= 11.695 \text{ cm}$$

Write 0.125252525... as a fraction

$$x = 0.1252525\dots$$

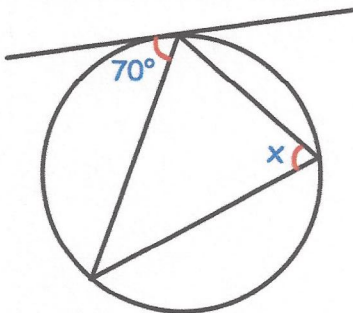
$$10x = 1.252525\dots$$

$$1000x = 125.2525\dots$$

$$990x = 124$$

$$x = \frac{124}{990}$$

$$= \frac{62}{495}$$

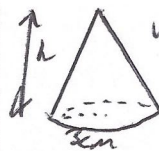


Find x

$$x = 70^\circ$$

A cone has a volume of 80cm^3
The radius of the cone is 3cm.

Work out the height of the cone.



$$80 = \frac{1}{3} \times \pi \times 3^2 \times h$$

$$240 = \pi \times 9 \times h$$

$$h = 8.488 \text{ cm}$$