

31st May

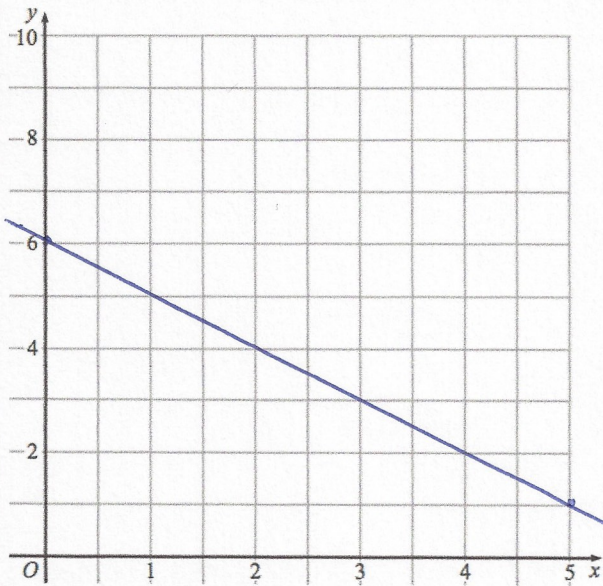


Corbettmaths

Factorise

$$y^2 + 3y - 18$$

$$(y+6)(y-3)$$

Draw  $y = 6 - x$ 

What is the gradient of the line?

-1

What is the size of each exterior angle of a regular hexagon?

$$360 \div 6 = 60^\circ$$

What is the size of each interior angle of a regular nonagon?

$$360 \div 9 = 40$$

$$180 - 40 = 140^\circ$$

Work out the gradient of the straight line that passes through (2, 6) and (6, 12).

$$\frac{6}{4} = 1.5$$