

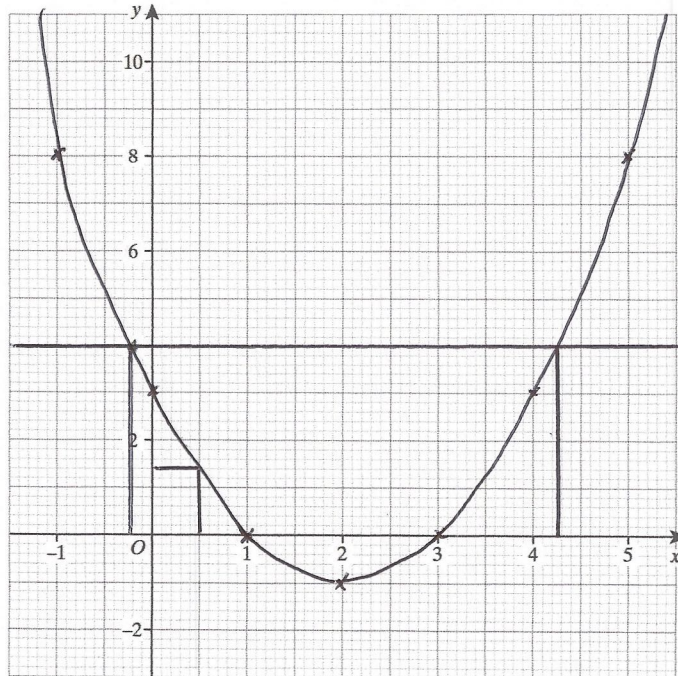
31st May



Corbettmaths

Megan is going to drive 160 ^{miles} from Redville to Castletown.
 There are road works for 15 miles of the journey.
 Megan thinks that her average speed will be 40mph where there are road works and 65mph for the rest of the journey.
 Work out how long the journey should take.

145 miles (no road works)
 15 miles (road works)
 $t = \frac{d}{s}$ $\frac{145}{65} = 2.23$ 2 hours 14 minutes
 $\frac{15}{40} = 0.375$ 22.5 minutes
 \approx 2 hours 36.5 minutes



Draw $y = x^2 - 4x + 3$

x	-1	0	1	2	3	4	5
y	8	3	0	-1	0	3	8

Write down the coordinates of the turning point of the graph

(2, -1)

Find an estimate for $f(0.5)$

1.4

Find estimates for the roots of $f(x) = 4$

$x = -0.25$ $x = 4.25$