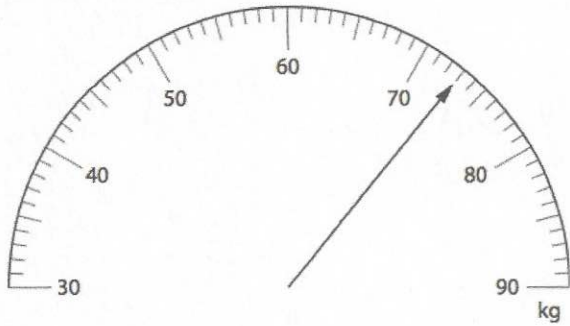


31st May



Corbettmaths



What weight is shown on the scales?

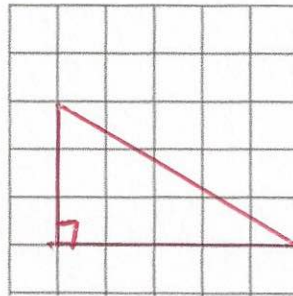
73 kg

Express 50p as a fraction of £4

Give your answer in its simplest form.

$$\frac{50}{400} = \frac{1}{8}$$

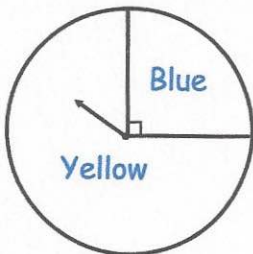
On the grid, draw a right angled triangle.



2 birthday cards at £2.70 each
 1 toy at £6.50 each
 1 book at £5.75 each

Hannah pays with a £50 note.
 How much change does she get?

$$\begin{array}{r} £5.40 \\ £6.50 \\ £5.75 \\ \hline 17.65 \end{array} \quad \begin{array}{r} 499 \\ £50.00 \\ - 17.65 \\ \hline £32.35 \end{array}$$



The fair spinner is spun once.

What is the probability the spinner lands on Yellow?

$$\frac{3}{4}$$