

9th May



Corbettmaths

A solid cube of side length 6cm, is made from a material with density 2.7g/cm^3

Calculate the mass of the cube.

$$d^m v$$

$$v = 6 \times 6 \times 6 = 216 \text{ cm}^3$$

$$216 \times 2.7 = 583.2 \text{ g}$$

Factorise

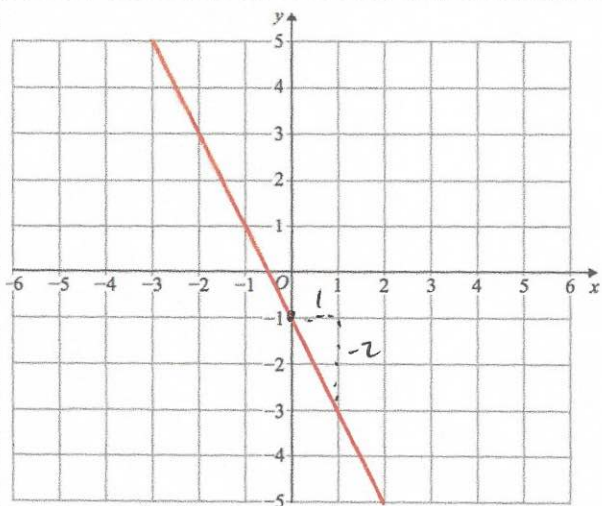
$$16 - y^2$$

$$(4 - y)(4 + y)$$

Factorise

$$y^2 + 5y - 14$$

$$(y + 7)(y - 2)$$



$$\text{gradient} = \frac{\text{rise}}{\text{run}} = \frac{-2}{1} = -2$$

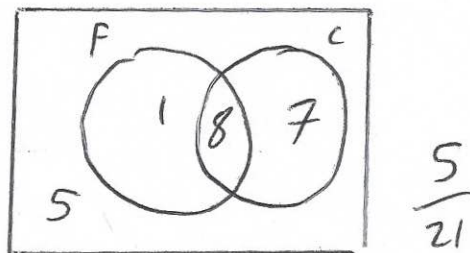
Work out the equation of line L

$$y = -2x - 1$$

In a class, there are 21 students. Of these students, 9 plays football, 15 play cricket and 8 play both football and cricket.

A pupil is picked at random.

Find the probability that the pupil does not play football or cricket.



$$\frac{5}{21}$$