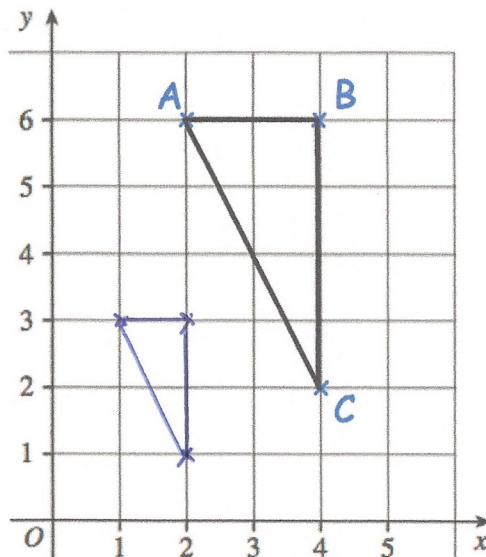


19th October



Corbettmaths



Triangle ABC is drawn on the grid.
Enlarge triangle ABC with scale factor $\frac{1}{2}$ and centre (0,0)

Philip runs at an average speed of 4 m/s.
How long will it take Philip to complete a 10 kilometre race?
Give your answer in minutes and seconds.



$$10 \text{ km} = 10000 \text{ m}$$

$$10000 \div 4 = 2500 \text{ seconds}$$

$$2500 \div 60 = 41.6 \text{ mins}$$

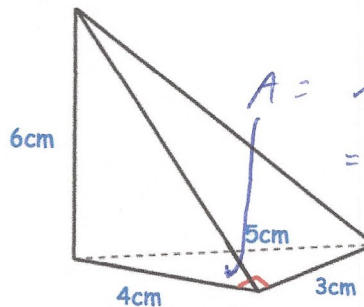
41 minutes 40 seconds

A triangular-based pyramid is shown.
Calculate the volume of the pyramid.

$$V = \frac{1}{3} Ah$$

$$V = \frac{1}{3} \times 6 \times 6$$

$$= 12 \text{ cm}^3$$



Write down the exact value of $\tan 45^\circ$

1

Write down the exact value of $\tan 60^\circ$

$\sqrt{3}$