

31st October

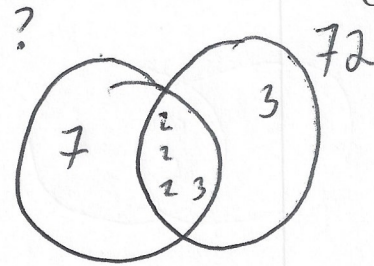


Corbettmaths

The HCF of two numbers is 24.
The LCM of the two numbers is 504.
One of the numbers is 72.

Find the other number

168



$$(3 \times 10^6)^3$$

$$27 \times 10^{18}$$

$$2.7 \times 10^{19}$$

A is inversely proportional to B cubed.

$$A \propto \frac{1}{B^3}$$

When A = 250, B = 5.

$$A = \frac{k}{B^3}$$

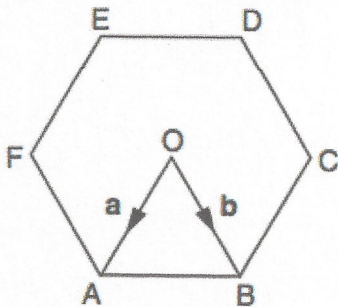
Find A when B = 3.

$$250 = \frac{k}{5^3}$$

$$k = 31250$$

$$A = \frac{31250}{B^3}$$

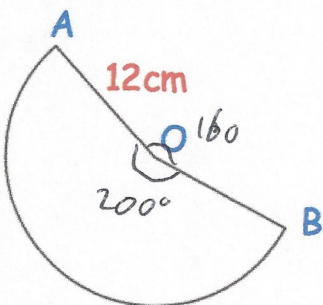
$$A = \frac{31250}{3^3} = 1157.4074$$



Find in terms of a and b

OC $-a + b$

FC $-2a + 2b$



Angle AOB is 160° .

Calculate the perimeter of the sector shown.

$$\frac{200}{360} \times \pi \times 24 = 41.888$$

$$41.888 + 12 + 12 = 65.888 \text{ cm}$$