

7th October



Corbettmaths

Decrease 18000 by 7%

$$7\% \text{ of } 18000 = 1260$$

$$18000 - 1260 = 16740$$



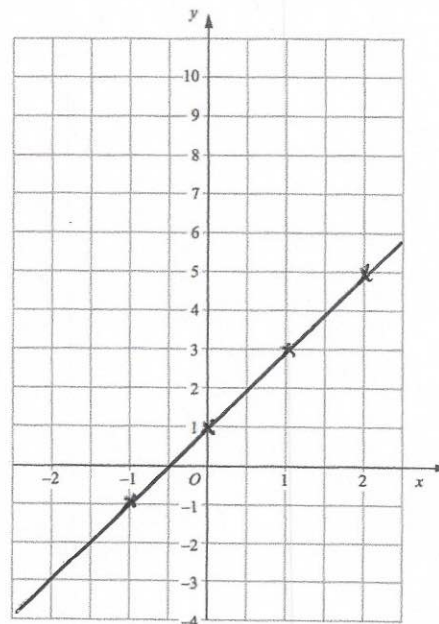
Holly works out the answer to $135.66 + 193.88$ on a calculator.
Round her answer to one decimal place.

$$329.5$$

Complete the table of values for
 $y = 2x + 1$

x	-1	0	1	2
y	-1	1	3	5

Draw the graph of $y = 2x + 1$.



Factorise

$$y^2 - 6y = y(y - 6)$$