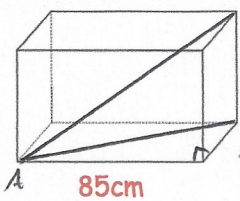


7th October



Corbettmaths



40cm
40cm
85cm
 $AB = 93.941$
 $AC = 102.141$

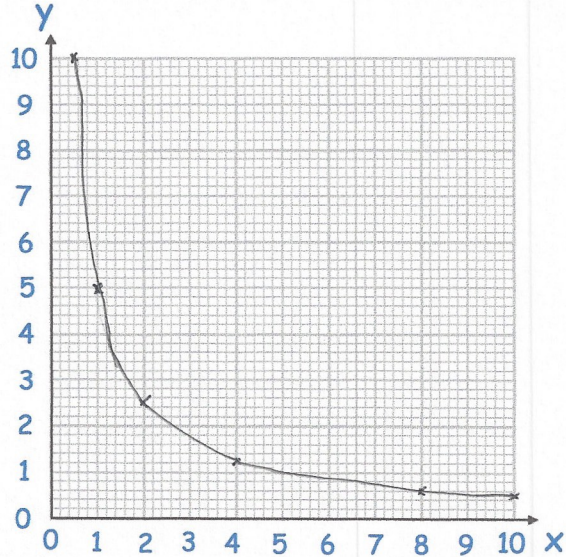
Can a 1m rod fit inside this box?

yes

Complete the table of values for

$$y = \frac{5}{x}$$

x	0.5	1	2	4	8	10
y	10	5	2.5	1.25	0.625	0.5



On the grid, draw the graph of

$$y = \frac{5}{x}$$

for $0.5 \leq x \leq 10$

Find where $y = 4x + 5$ meets:

the y axis.

$(0, 5)$

the x axis.

$$0 = 4x + 5$$

$$-5 = 4x$$

$$x = -1.25$$

$(-1.25, 0)$

Solve the simultaneous equations

$$y = 13 - 4x$$

$$3x + 2y = 16$$

$$3x + 2(13 - 4x) = 16$$

$$3x + 26 - 8x = 16$$

$$-5x = -10$$

$$x = 2$$

$$y = 5$$