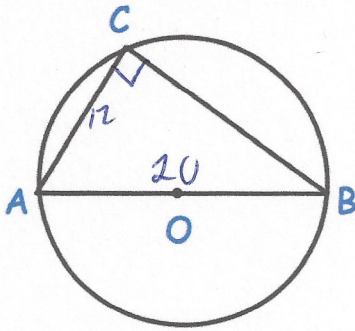


16th September



Corbettmaths



AB is 20cm.  
AC is 12cm.

Find the size of BC.

$$BC^2 + 12^2 = 20^2$$

$$BC^2 = 256$$

$$BC = 16\text{cm}$$

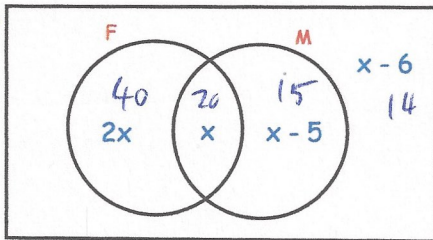
Simplify

$\sqrt{8}$

$$\sqrt{4} \times \sqrt{2}$$

$$2\sqrt{2}$$

$\xi$



$\xi = 89$  stamps in a collection

F = French stamps

M = Modern stamps

Find how many French stamps there are.

$$5x - 11 = 89$$

$$x = 20$$

**60**

A swimming pool has surface area  $300\text{m}^2$   
The swimming pool is a prism of depth 110cm.

Work out the volume of the swimming pool.  
Give your answer in  $\text{m}^3$ .

$$300 \times 1.1 = 330\text{m}^3$$

$\div 20$

A scale model of the swimming pool is made.  
The depth of the model swimming pool is 5.5cm

Find the surface area of the model swimming pool.

$$300 \div 20^2 = 0.75\text{m}^2$$

or

$$7500\text{cm}^2$$