

18th September



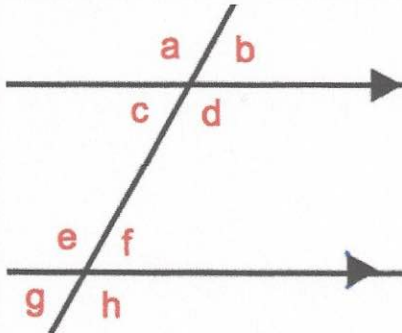
Corbettmaths

Jack truncates a number, y , to one decimal place.

The result is 1.2

Write down the error interval for y

$$1.2 \leq y < 1.3$$

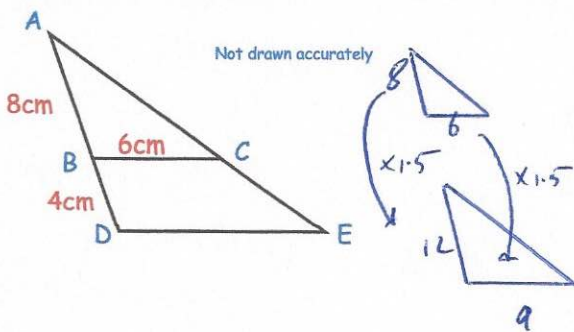


Which angle is vertically opposite to b ?

c

Which angle is alternate to c ?

f



Triangle ABC is similar to triangle ADE .

$AB = 8\text{cm}$ $BC = 6\text{cm}$

$AD = 4\text{cm}$

Work out the length of DE .

9cm

Time (t minutes)	Frequency	fx
$0 < t \leq 6$	3 x 15	45
$6 < t \leq 12$	9 x 25	225
$12 < t \leq 18$	15 x 20	300
$18 < t \leq 24$	21 x 12	252
$24 < t \leq 30$	27 x 8	216
	<u>80</u>	<u>1038</u>

Calculate an estimate for the mean

$$1038 \div 80 = 12.975$$

Line A is parallel to $y = 4x + 3$ and also passes through the origin.

Write down the equation of Line A.

$$y = 4x$$