

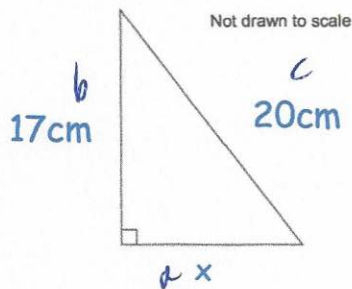
22nd September



Corbettmaths

Work out the reciprocal of $0.7 = \frac{7}{10}$

$$\frac{10}{7} \text{ or } 1\frac{3}{7}$$



Find x

$$a^2 + b^2 = c^2$$

$$x^2 + 17^2 = 20^2$$

$$x^2 + 289 = 400$$

$$x^2 = 111$$

$$x = \sqrt{111} = 10.536 \text{ cm}$$

Solve

$$3w + 20 = 9w - 10$$

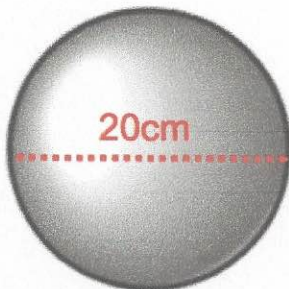
$$\begin{array}{r} -3w \qquad \qquad -3w \\ 20 = 6w - 10 \\ 6w = 30 \\ w = 5 \end{array}$$

James leaves £8000 in the bank for two years.

It earns compound interest of 5% per year.

Calculate the total amount in the bank at the end of two years.

$$8000 \times 1.05^2 = \underline{\underline{8820}}$$



Calculate the volume of the sphere.
Give your answer to 1 decimal place.

$$\begin{aligned} V &= \frac{4}{3} \pi r^3 \\ &= \frac{4}{3} \times \pi \times 10^3 \\ &= 4188.8 \text{ cm}^3 \end{aligned}$$