

28th September



Corbettmaths

Holly has worked out the answer to a calculation.
Her teacher has told her to write all her answers to four significant figures.



827.5

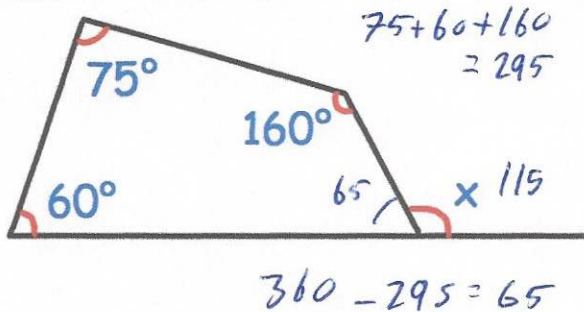
Round her answer to four significant figures

Shortbread

	Serves 4	1 person	<u>3</u>
Butter	80g	20g	60g
Caster Sugar	60g	15g	45g
Plain Flour	100g	25g	75g
Cornflour	40g	10g	30g

How much of each ingredient will Richard need for 3 people?

Butter:60.....g
 Caster Sugar:45.....g
 Plain Flour:75.....g
 Cornflour:30.....g



Find x

115°

Find the value of $4c + 5g$ when

$c = 2$ and $g = 1.5$

$$4 \times 2 + 5 \times 1.5$$

$$8 + 7.5 = 15.5$$

Calculate the volume of the cylinder.

$$V = \pi r^2 h$$

$$= \pi \times 3^2 \times 2.5$$

$$= 70.6858... \text{ cm}^3$$

