

29th September



Corbettmaths

Find y

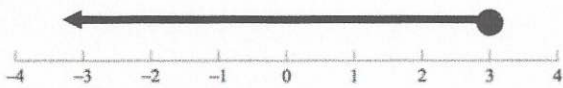
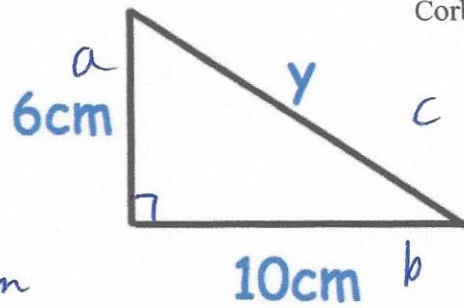
$$a^2 + b^2 = c^2$$

$$6^2 + 10^2 = y^2$$

$$36 + 100 = y^2$$

$$y^2 = 136$$

$$y = \sqrt{136} = 11.66 \text{ cm}$$



Write down the inequality shown above

$$x \leq 3$$

Solve  $5x + 1 > 9x + 3$

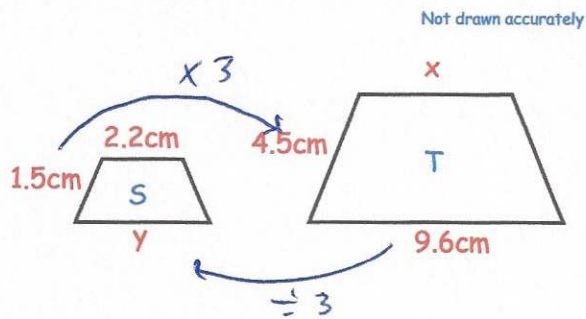
$$-5x \quad -5x$$

$$1 > 4x + 3$$

$$-2 > 4x$$

$$4x < -2$$

$$x < -0.5$$



Trapezium S and trapezium T are similar.

Find the size of y.

$$9.6 \div 3 = 3.2 \text{ cm}$$

An asteroid travels at 25 kilometres per second.

How far does it travel in one hour?  
Give your answer in standard form.

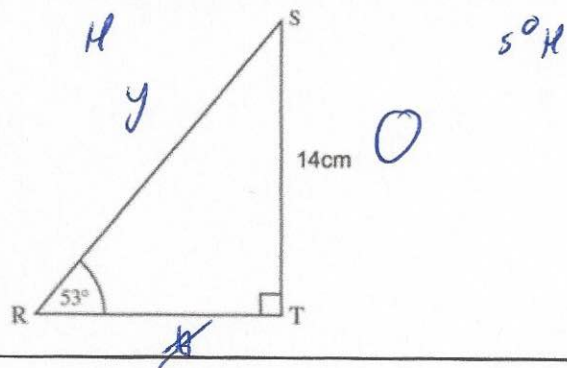
$$25 \text{ km in 1 second}$$

$$1500 \text{ km in 1 minute}$$

$$90000 \text{ km in 1 hour}$$

$$90000 \text{ km}$$

$$= 9 \times 10^4$$



Find the length of RS.

$$y = \frac{14}{\sin 53}$$

$$y = 17.53 \text{ cm}$$