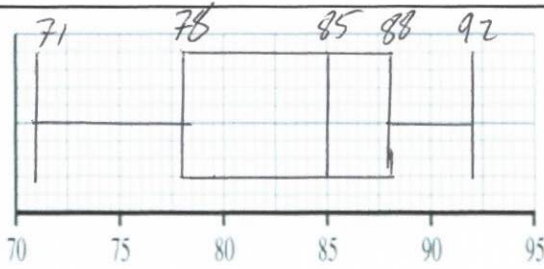


27th March



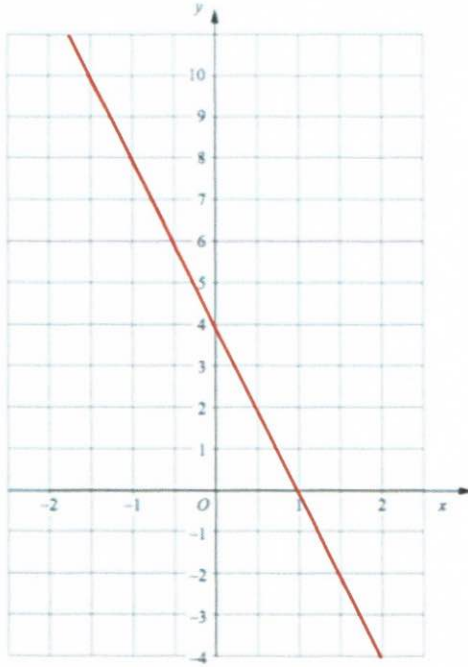
Corbettmaths



The median score was 85. The lowest quartile was 78 and lowest score was 71. $+10 = 88$ $+21 = 92$

The range is 21 and interquartile range 10.

Draw the box plot



Line A is shown on the grid.

Find the equation of line A

$$y = -4x + 4$$

Line B is parallel to Line A and passes through $(9, 20)$.

$$y = -4x + c$$

Find the equation of line B

$$20 = -4 \times 9 + c$$

$$20 = -36 + c$$

$$c = 56$$

$$y = -4x + 56$$

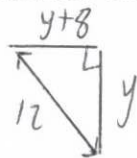
What is the value of n

$$5^n = \frac{1}{125}$$

$$n = -3$$

A man walks y miles North and then $(y + 8)$ miles west.

He is now 12 miles from the starting point.



Show y satisfies $y^2 + 8y - 40 = 0$

$$y^2 + (y+8)^2 = 12^2$$

$$y^2 + (y+8)(y+8) = 144$$

$$y^2 + y^2 + 16y + 64 = 144$$

$$2y^2 + 16y - 80 = 0 \quad \div 2$$

$$y^2 + 8y - 40 = 0$$