

28th March



Corbettmaths

Anna, Beth and Carla share money in the ratio 2:3:5.

Carla receives £75.

How much does Beth receive?

$$75 \div 5 = 15$$

$$\text{Anna: } 15 \times 2 = 30$$

$$\text{Beth: } 15 \times 3 = 45$$

£45

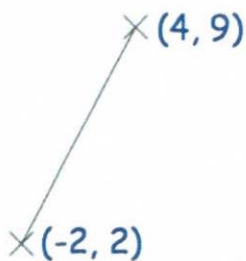
Simplify

$$\frac{7^2 \times 7^3}{7}$$

$$\frac{7^5}{7^1}$$

$$7^4$$

Find the midpoint of (-2, 2) and (4, 9)



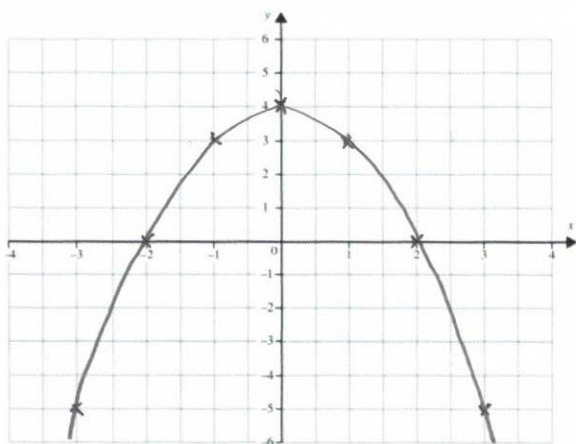
$$-2 + 4 = 2$$

$$2 \div 2 = 1$$

$$2 + 9 = 11$$

$$11 \div 2 = 5.5$$

(1, 5.5)



Complete the table for the graph $y = 4 - x^2$

x	-3	-2	-1	0	1	2
y	-5	0	3	4	3	0

Draw the graph on the grid.