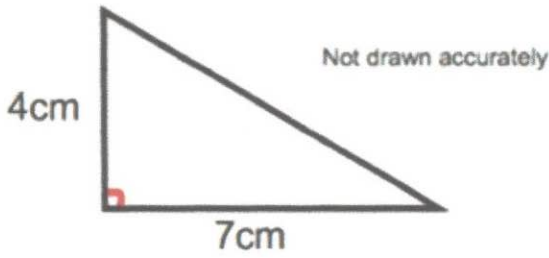


30th December



Corbettmaths



Work out the area of the triangle.

$$\frac{1}{2} (7 \times 4) = 14 \text{ cm}^2$$

Kelly is organising a barbecue. She needs bread rolls and burgers.

Bread rolls are sold in packs of 20.  
Burgers are sold in packs of 12.

Kelly buys exactly the same number of bread rolls as burgers.

20 40 60  
12 24 36 48 60

3  
..... packs of bread rolls  
5  
..... packs of burgers

Mollie is going to draw a pie chart

| Sport    | Frequency |
|----------|-----------|
| Netball  | 15        |
| Hockey   | 10        |
| Rugby    | 26        |
| Football | 9         |
|          | <u>60</u> |

Angle  
90°  
60°  
156°  
54°

Calculate the size of each angle

$$360 \div 60 = 6^\circ$$

The table shows the prices of first and second class stamps for Letters and Large Letters up to 500g.

Matt is going to post a Letter weighing 80g and a Large Letter weighing 300g. He chooses to post them both as second class.

| Format        | Weight     | 1st Class | 2nd Class |
|---------------|------------|-----------|-----------|
| Letters       | 0 - 100g   | 62p       | 53p       |
| Large Letters | 0 - 100g   | 93p       | 73p       |
|               | 101 - 250g | £1.24     | £1.17     |
|               | 251 - 500g | £1.65     | £1.48     |

How much money has Matt saved by posting second class instead of first class?

148      165  
+ 53      + 62  
-----  
201      227

$$227 - 201 = 26$$

26p