

2nd March



Corbettmaths

Factorise

$y^2 - 25$

$(y-5)(y+5)$

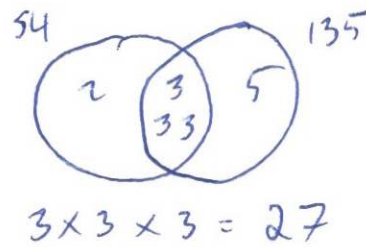
Factorise

$y^2 + 2y - 24$

$(y+6)(y-4)$

Find the HCF of 54 and 135

$54 = 2 \times 3 \times 3 \times 3$
 $135 = 3 \times 3 \times 3 \times 5$

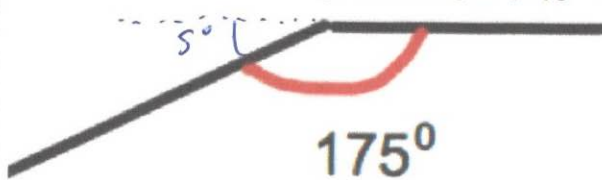


Amount spent, m, (£)	Frequency	fx
$0 < m \leq 5$	2.5	4
$5 < m \leq 10$	7.5	12
$10 < m \leq 15$	12.5	26
$15 < m \leq 20$	17.5	8
	<u>50</u>	<u>565</u>

Calculate an estimate of the mean

$565 \div 50 = 11.3$

Shown below is an interior angle from a regular polygon.



$360 \div 5 = 72$ sides

Calculate the number of sides the polygon has.

Find the length of AC

$AC = \frac{12}{\tan 70}$
 $= 4.3676 \text{ cm}$

