

5th March



Corbettmaths

A particle travels at 20km/h.

What is this speed in metres per second?

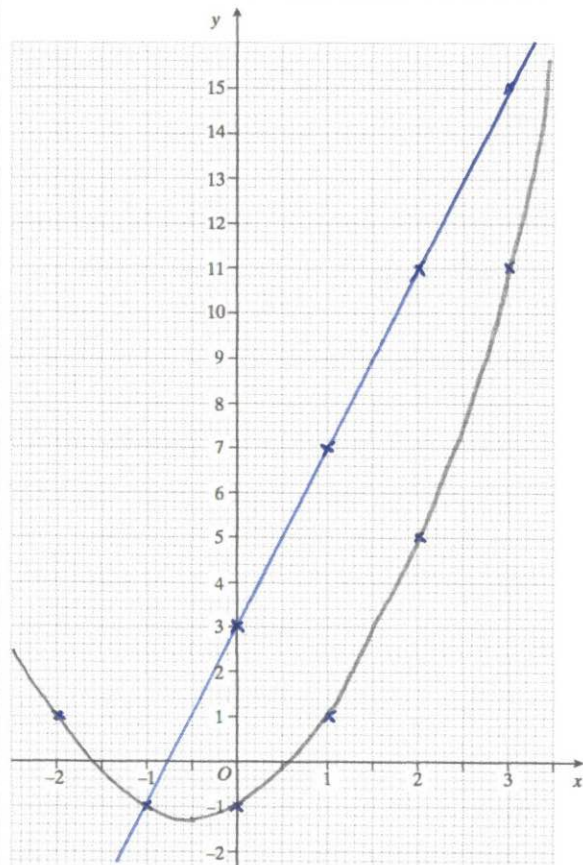
20000 ~~m~~/hour
 $\downarrow \div 60$
 333.3 m/min
 $\downarrow \div 60$
 5.5 m/s

Work out

$$5^{-2} \times 4^2 \quad \frac{1}{5^2} \times 4^2$$

$$\frac{1}{25} \times 16$$

$$\frac{16}{25}$$



Draw the graph $y = 4x + 3$

x	0	1	2	3	4
y	3	7	11	15	19

Draw the graph $y = x^2 + x - 1$

x	-2	-1	0	1	2	3	4
y	1	-1	-1	1	5	11	19

Write down the coordinates of where the two graphs intersect.

$(-1, -1)$ and $(4, 19)$