

11th September



Corbettmaths

Work out the product of

$$\sqrt[4]{81} \quad \sqrt{36} \quad \sqrt[3]{125}$$

$$3 \times 6 \times 5$$

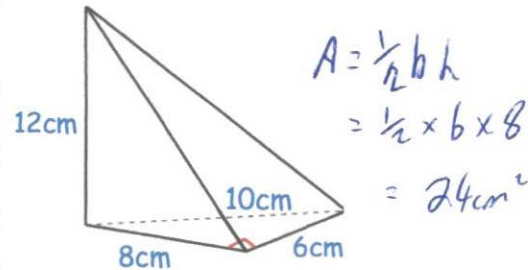
90

Find the volume of this triangular-based pyramid

$$V = \frac{1}{3}Ah$$

$$= \frac{1}{3} \times 24 \times 12$$

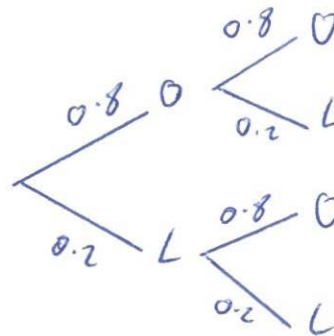
$$= 96\text{cm}^3$$



The probability that a train arrives late is 0.2

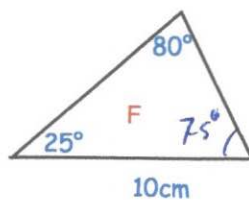
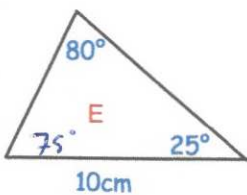
James is travelling by train on Saturday and Sunday.

Show this information on a probability tree diagram.



Work out the probability the train is on time on both days.

$$0.8 \times 0.8 = 0.64$$



State the condition why the two triangles are congruent.

ASA