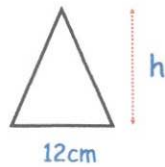
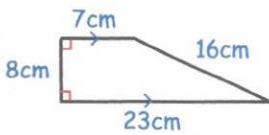


5th September



Corbettmaths

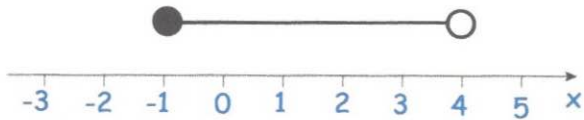
Find  $x$ 

$$\frac{1}{2}(7+23)8 = 120\text{cm}^2$$

$$\frac{1}{2}(12)h = 120$$

$$6h = 120 \quad h = 20\text{cm}$$

The trapezium and triangle have the same area



Write down the inequality shown by the diagram.

$$-1 \leq x < 4$$

Solve

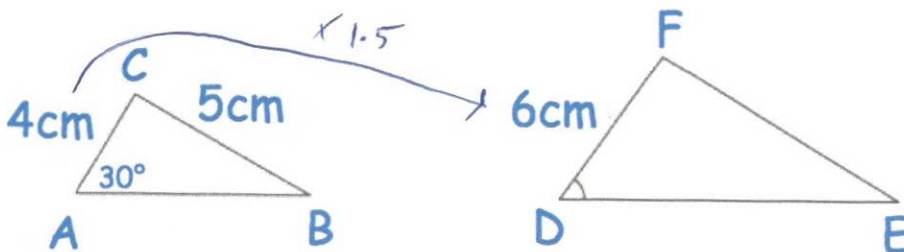
$$\frac{9(4x - 1)}{2x} = 15$$

$$9(4x - 1) = 30x$$

$$36x - 9 = 30x$$

$$6x = 9$$

$$x = 1.5$$



Triangles ABC and DEF are similar.

Find the length of EF

$$5 \times 1.5 = 7.5$$

Find the size of angle EDF

$$30^\circ$$