

25th August



Corbettmaths

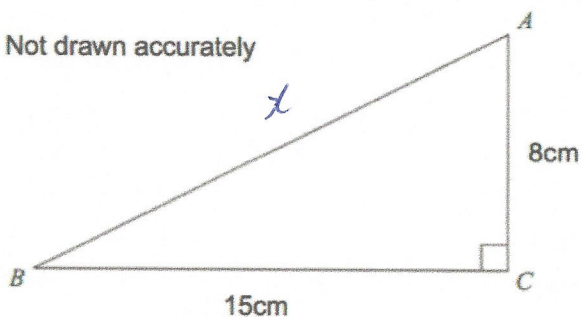
Expand and simplify

$$(3y - 2)(2y + 3)$$

$$6y^2 + 9y - 4y - 6$$

$$6y^2 + 5y - 6$$

Not drawn accurately

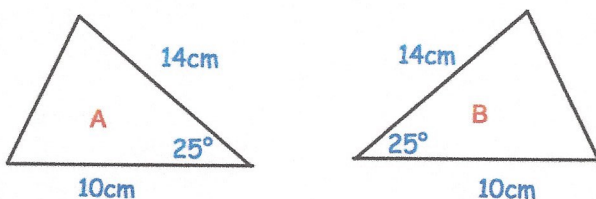


Find the length of AB.

$$x^2 = 8^2 + 15^2$$

$$x^2 = 289$$

$$x = 17 \text{ cm}$$



State the condition why these triangles are congruent.

SAS

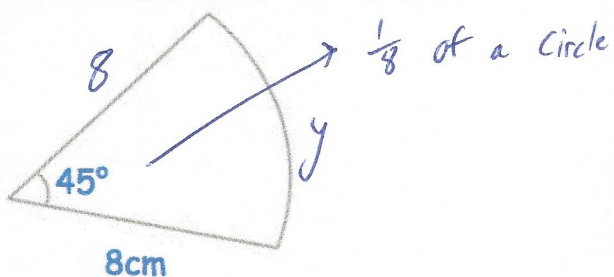
Work out

$$\frac{\pi}{6} \div \frac{\pi}{2}$$

$$\frac{\pi}{6} \times \frac{2}{\pi} = \frac{2\cancel{\pi}}{6\cancel{\pi}}$$

$$= \frac{1}{3}$$

Find the perimeter of the sector.



$$\pi \times 16 = 50.265\dots$$

$$50.265\dots \div 8 = 6.2831\dots$$

$$8 + 8 + 6.2831\dots$$

$$= 22.283 \text{ cm}$$