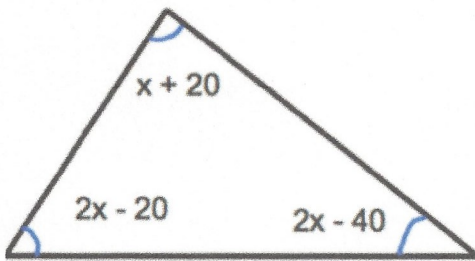


12th October



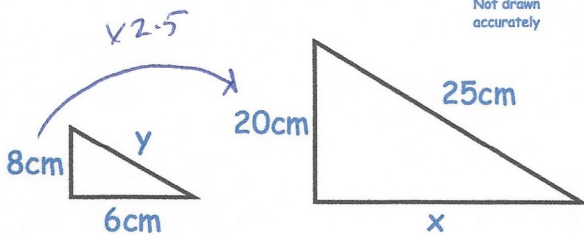
Corbettmaths

Find x

$$5x - 40 = 180$$

$$5x = 220$$

$$x = 44^\circ$$



Shown below are two similar triangles.

Find the size of y .

$$25 \div 2.5 = 10$$

Calculate the surface area of a sphere of radius 5cm.

$$4\pi r^2$$

$$4\pi \times 5^2 = 100\pi$$

$$314.159 \text{ cm}^2$$

Work out

$$4^{-3}$$

$$\frac{1}{4^3} = \frac{1}{64}$$

Solve these simultaneous equations

$$5x - 2y = -23$$

$$5x - 6y = -39$$

Subtract

$$4y = 16$$

$$y = 4$$

$$5x - 8 = -23$$

$$5x = -15$$

$$x = -3$$