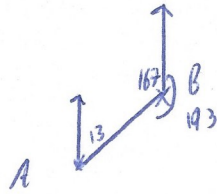


13th October



Corbettmaths

The bearing of A from B is 193° ,
find the bearing of B from A.



013°

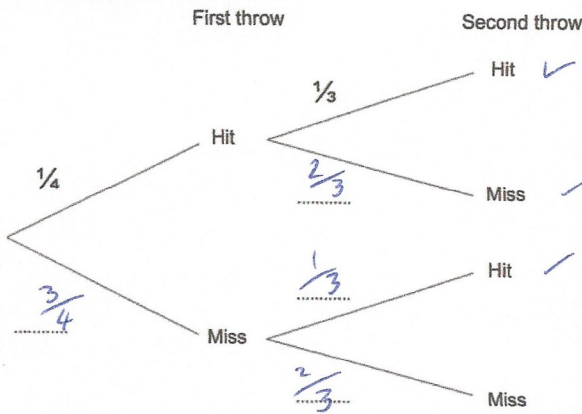
Write down the exact value of $\sin 0^\circ$

0

Write down the exact value of $\sin 90^\circ$

1

Jennifer is playing darts.
She throws two darts aiming for a Bullseye. The probability Jennifer hits the Bullseye on her first throw is $\frac{1}{4}$. The probability she hits the Bullseye on her second throw $\frac{1}{3}$.



Complete the tree diagram.

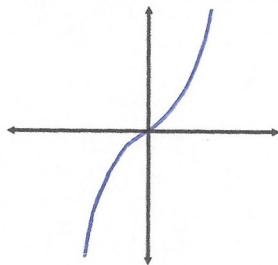
$$P(HH) = \frac{1}{4} \times \frac{1}{3} = \frac{1}{12}$$

$$P(HM) = \frac{1}{4} \times \frac{2}{3} = \frac{2}{12}$$

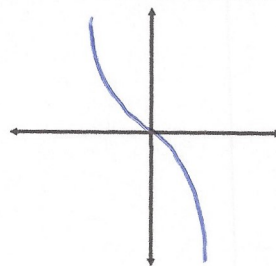
$$P(MH) = \frac{3}{4} \times \frac{1}{3} = \frac{3}{12}$$

Work out the probability Jennifer hits the Bullseye at least once.

$$\frac{6}{12} = \frac{1}{2}$$



Sketch $y = x^3$



Sketch $y = -x^3$