

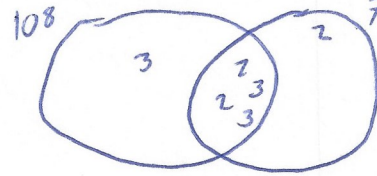
24th October



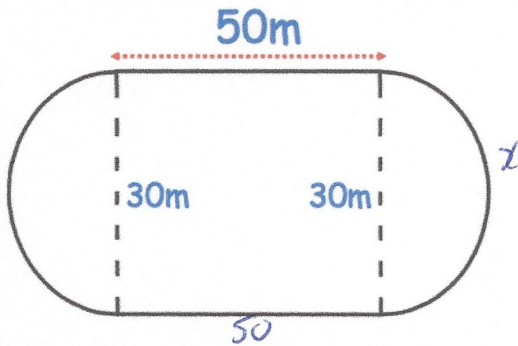
Find the Highest Common Factor (HCF) of 108 and 72.

$$108 = 2 \times 2 \times 3 \times 3 \times 3$$

$$72 = 2 \times 2 \times 2 \times 3 \times 3$$



$$\begin{aligned} \text{HCF} &= 2 \times 2 \times 3 \times 3 \\ &= 36 \end{aligned}$$



Find the perimeter of the running track.

$$\pi \times 30 = 94.2477\dots$$

$$x = 94.2477\dots \div 2 = 47.124\text{m}$$

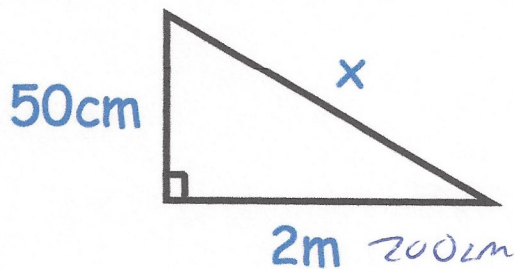
$$50 + 50 + 47.124 + 47.124 = 194.248\text{m}$$

A fair spinner has five sections of equal size, numbered 1 to 5. The spinner is spun twice and the scores are added together.

Find the probability of a total score of 9.

$$\frac{2}{25}$$

+	1	2	3	4	5
1	2	3	4	5	6
2	3	4	5	6	7
3	4	5	6	7	8
4	5	6	7	8	9
5	6	7	8	9	10



Find x

$$x^2 = 50^2 + 200^2$$

$$x^2 = 42500$$

$$x = 206.1553\text{cm}$$

The ratio of red to green sweets in a bag is 9:2

If r is the number of red sweets and g is the number of green sweets in the bag, work out a formula for r in terms of g.

$$R : G$$

$$9 : 2$$

$$r = 4.5g$$