

31st October



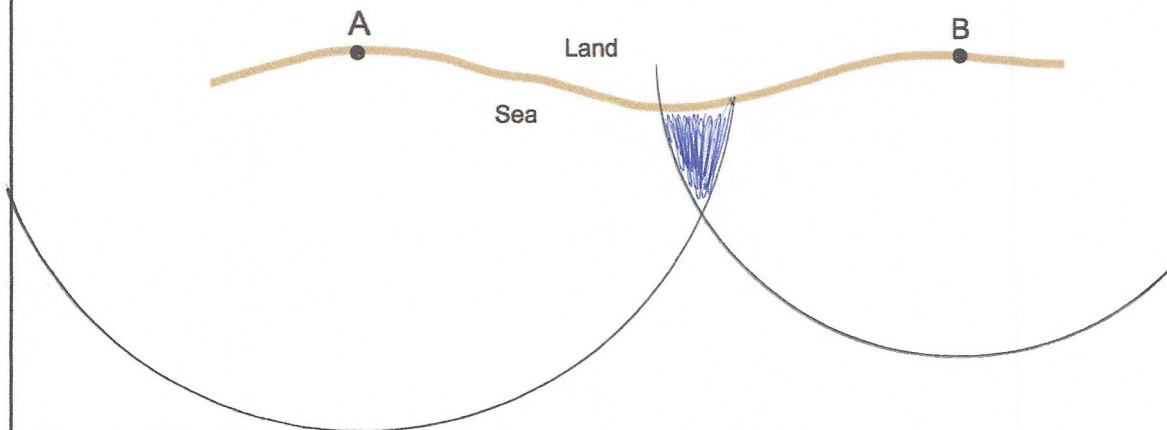
Corbettmaths

Factorise $y^2 - 64$

$$(y-8)(y+8)$$

The diagram shows two lighthouses.
 A boat is within 5 miles of lighthouse A.
 The same boat is within 4 miles of lighthouse B.
 Shade the possible area in which the boat could be.

1cm = 1 mile



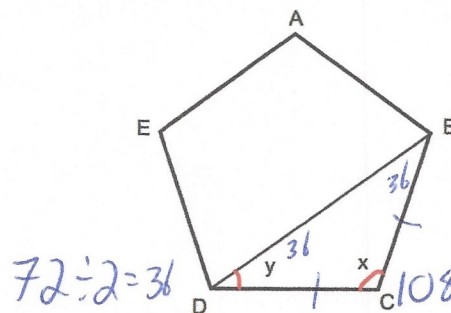
Shown below is a regular pentagon ABCDE.

Work out angles x and y

$$540 \div 5 = 108^\circ$$

$$x = 108^\circ$$

$$y = 36^\circ$$



Calculate the gradient of the straight line passing through (0, 3) and (4, 11).

$$\frac{\text{rise}}{\text{run}} = \frac{8}{4} = 2$$

Write down the equation of the line.

$$y = 2x + 3$$