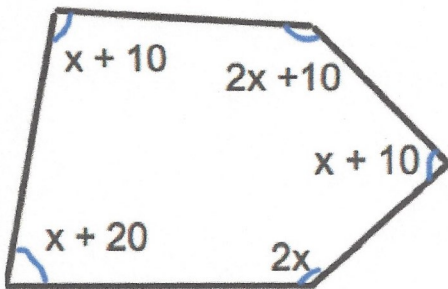


5th October



Corbettmaths

Find x

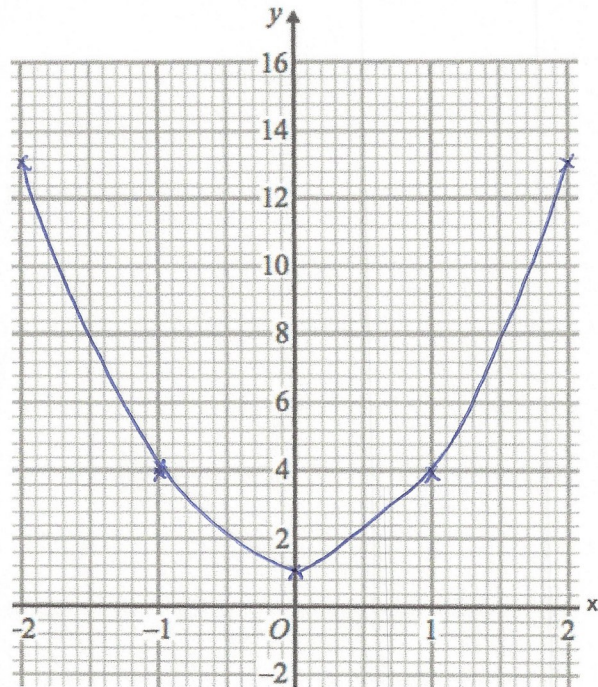
$$7x + 50 = 540$$

$$7x = 490$$

$$x = 70^\circ$$

Complete the table of values for $y = 3x^2 + 1$
and draw the graph

x	-2	-1	0	1	2
y	13	4	1	4	13



Shape	Probability
Circle	0.1
Triangle	0.3
Square	0.45
Rectangle	0.15

} 0.4

} 0.6

A bag contains 4 different shapes.

The probability of choosing a square is three times more likely than choosing a rectangle.

Complete the table.

Calculate the gradient of the straight line passing through (0, 2) and (3, 11).

$$\frac{\text{rise}}{\text{run}} = \frac{9}{3} = 3$$

Write down the equation of the line.

$$y = 3x + 2$$