

6th October



Corbettmaths

Find the reciprocal of 1.5 $\frac{3}{2}$

$$\frac{2}{3}$$

Find the reciprocal of 0.15 $\frac{3}{20}$

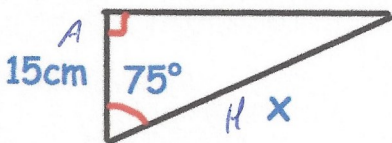
$$\frac{20}{3} = 6\frac{2}{3}$$

A fish tank has sprung a leak, at the base of the tank.
5% of the water is lost every minute.

How much water is lost from the tank after six minutes?

$$100 \times 0.95^6 = 73.509\dots$$

$$100 - 73.509\dots = \underline{26.49\%}$$

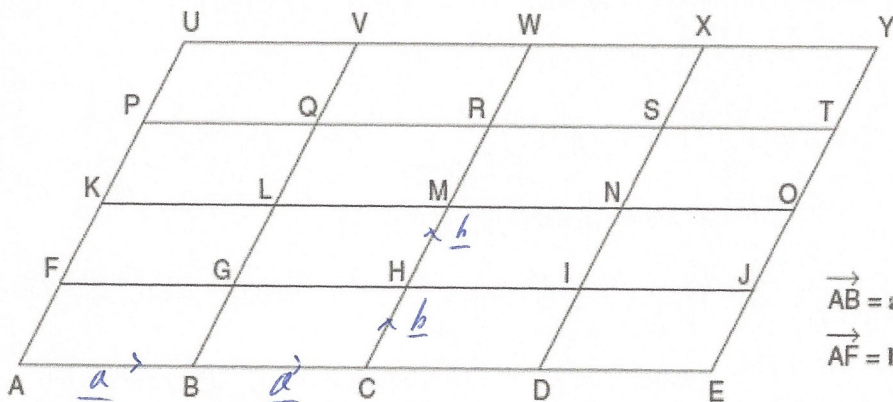


$C^A H$

Find x

$$x = \frac{15}{\cos 75}$$

$$= 57.96 \text{ cm}$$



$\vec{AB} = a$
 $\vec{AF} = b$

Write a vector for \vec{AM} in terms of a and b

$$2a + 2b$$

Write a vector for \vec{MK} in terms of a and b

$$-2a$$