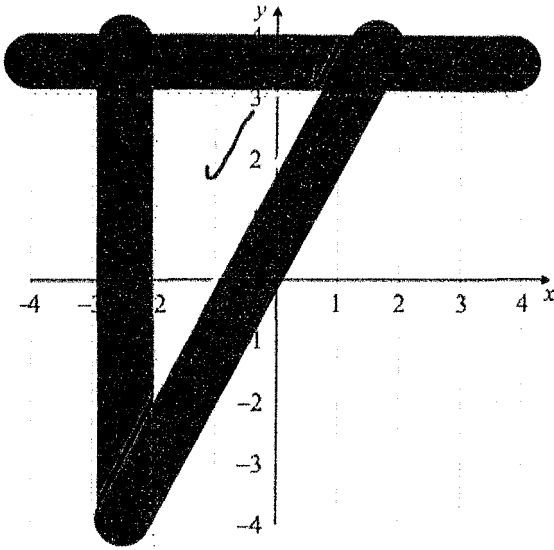


25th January



Corbettmaths



The diagram shows a region which satisfies 3 inequalities.

Find these inequalities.

$$y < 3$$

$$y \geq 2x + 2$$

$$x > -2$$

Make w the subject of

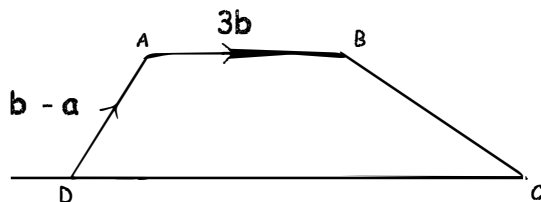
$$a(w - 2) = 5w + k$$

$$w = \frac{k + 2a}{a - 5}$$

Write $0.\dot{8}\dot{1}$ as a fraction.

Give your answer in its simplest form.

$$\frac{9}{11}$$



AB and DC are parallel.

$$DC = 2AB$$

Write down a vector for \overrightarrow{DC}

$$6b$$