

Examples

Workout



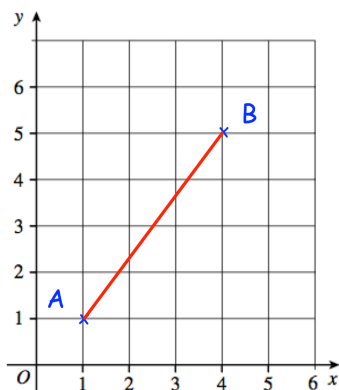
Click here



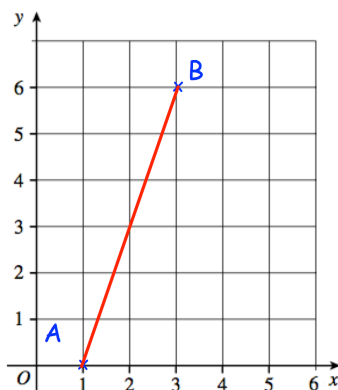
Scan here

Question 1: Calculate the length of the line joining the points A and B.

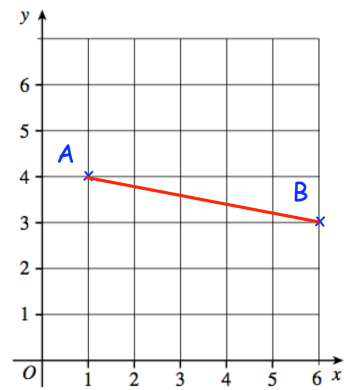
(a)



(b)

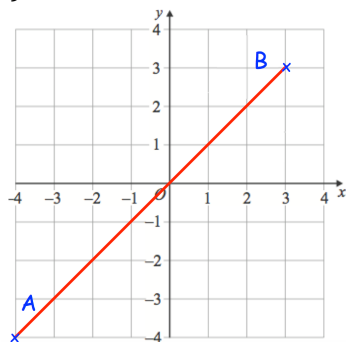


(c)

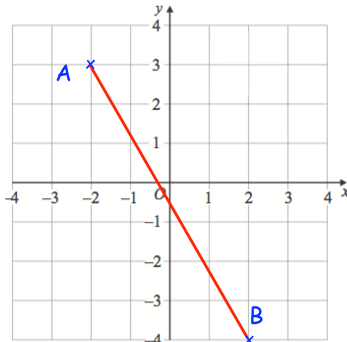


Question 2: Calculate the length of the line joining the points A and B.

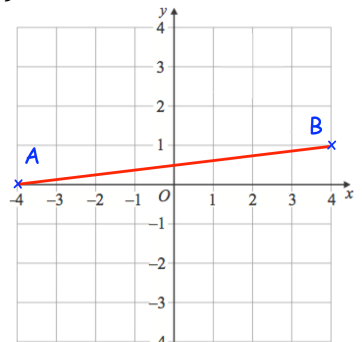
(a)



(b)

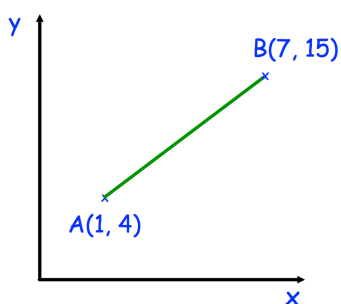


(c)

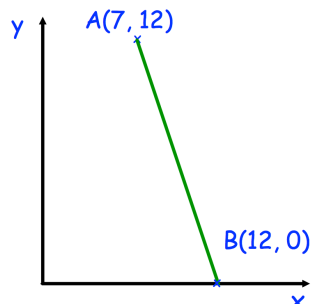


Question 3: Calculate the length of the line joining the point A and B.

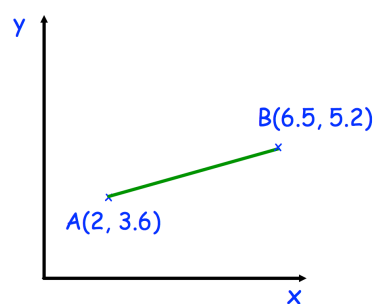
(a)



(b)

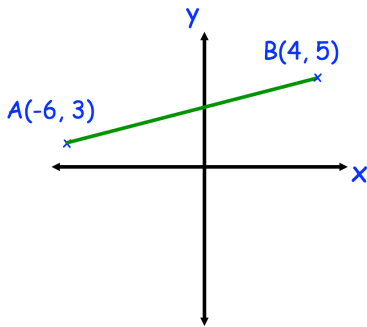


(c)

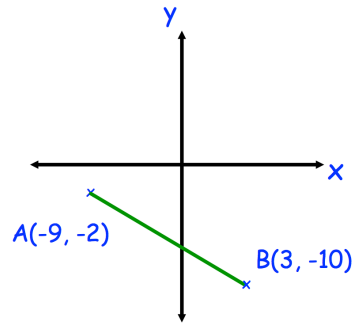


Question 4: Calculate the length of the line joining the points A and B

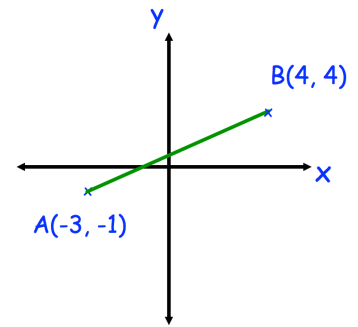
(a)



(b)



(c)



Question 5: Calculate the distance between the following pairs of coordinates

(a) (5, 1) and (9, 6)

(b) (1, 4) and (10, 10)

(c) (0, 0) and (6, 8)

(d) (2.5, 3) and (8, 0)

(e) (-6, 2) and (8, 3)

(f) (-5, -9) and (-3, 8)

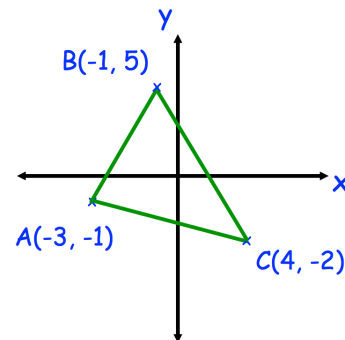
(g) (-5, 7) and (-3, -2)

(h) (-9, -9) and (3, -20)

(i) (-4, 0) and (0, -4)

Apply

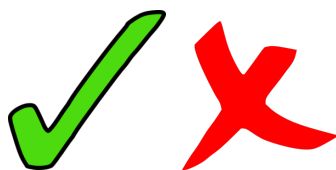
Question 1: Calculate the perimeter of triangle ABC.



Question 2: The distance between the points (1, 2) and (16, p) is 17.
Find the possible values of p.

Question 3: The distance between the points (-3, -4) and (q, 5) is 15.
Find the possible values of q.

Answers



Click here



Scan here