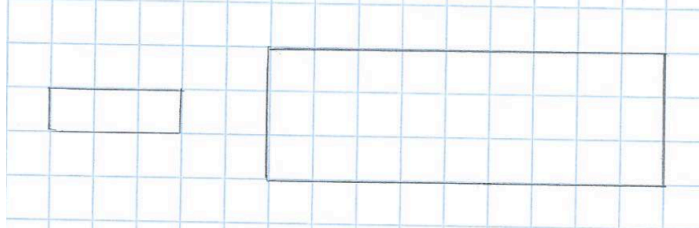


## Enlargements

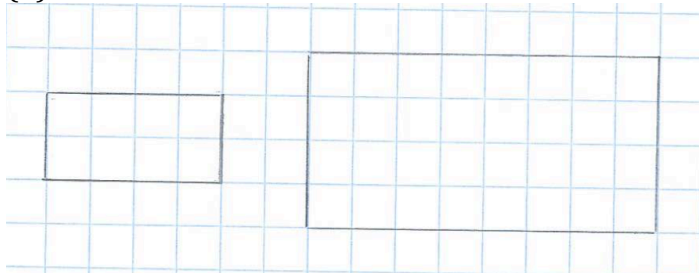
### Workout

Question 1

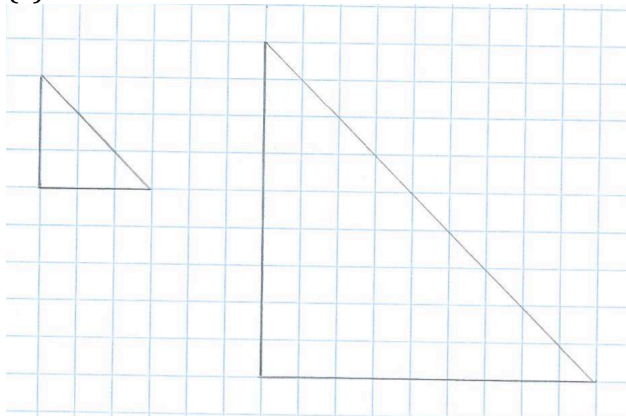
(a)



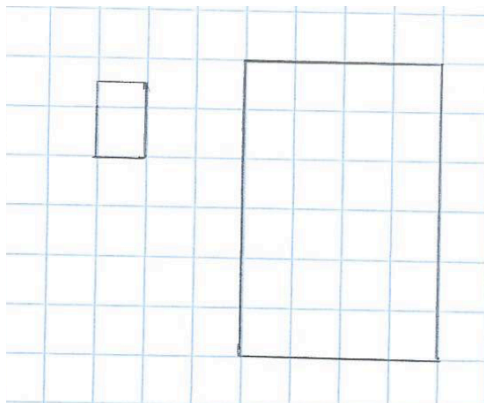
(b)



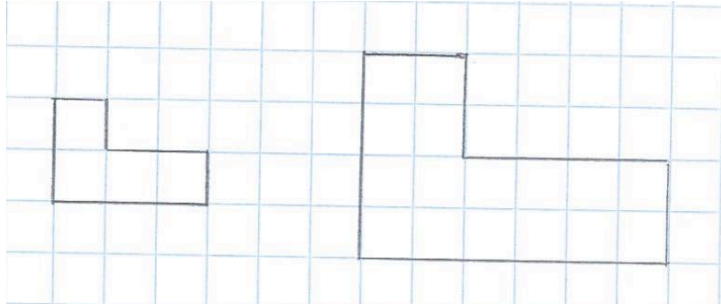
(c)



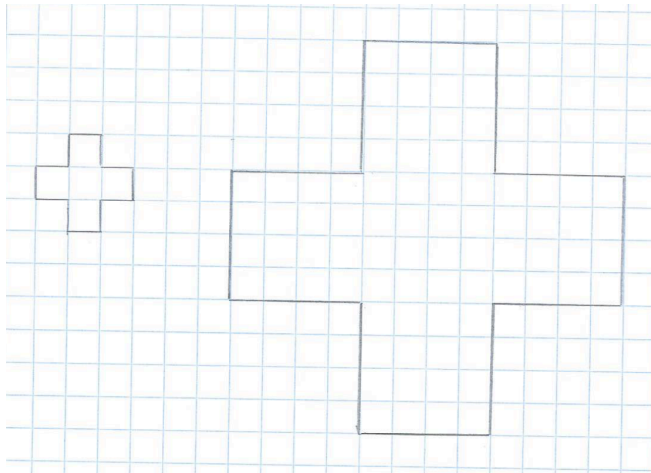
(d)



(e)

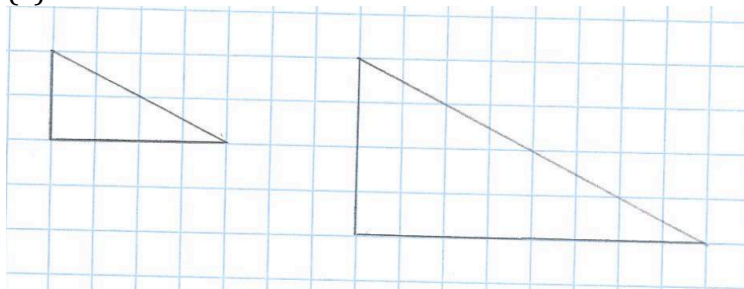


(f)

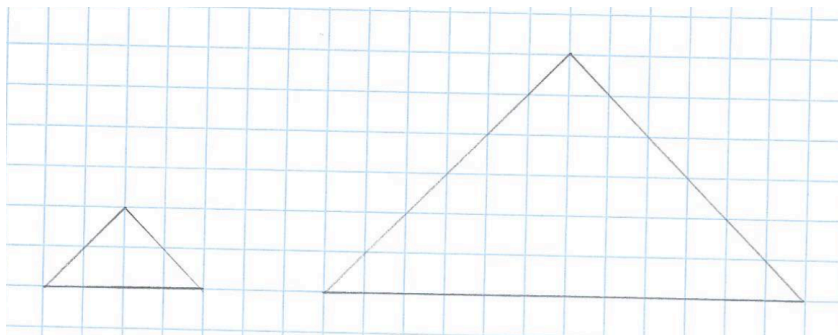


Question 2

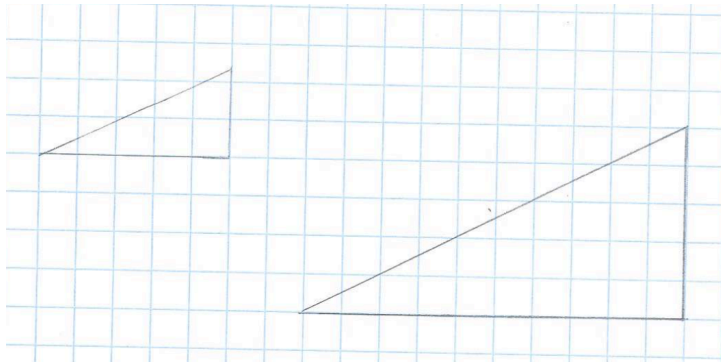
(a)



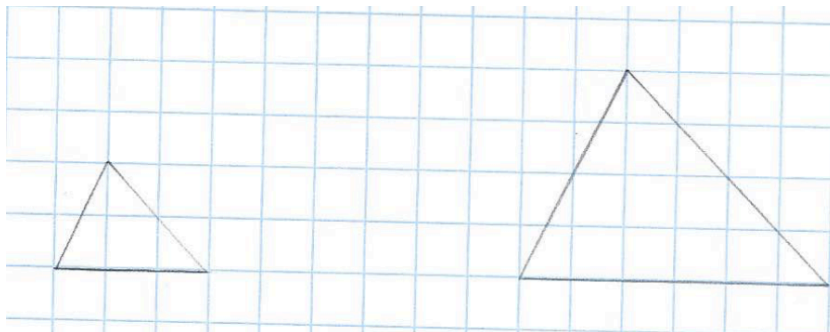
(b)



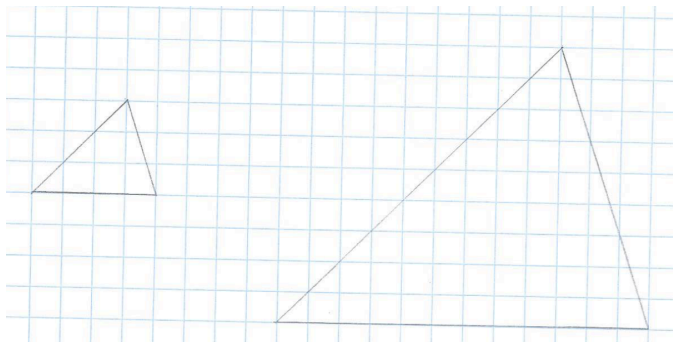
(c)



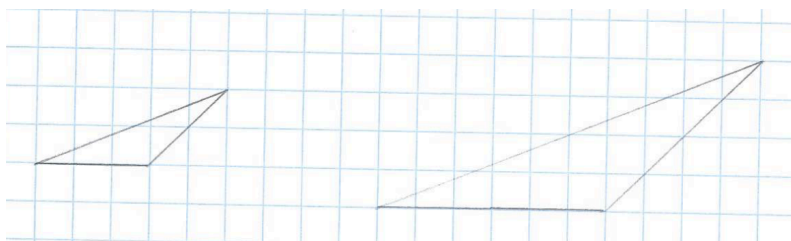
(d)



(e)

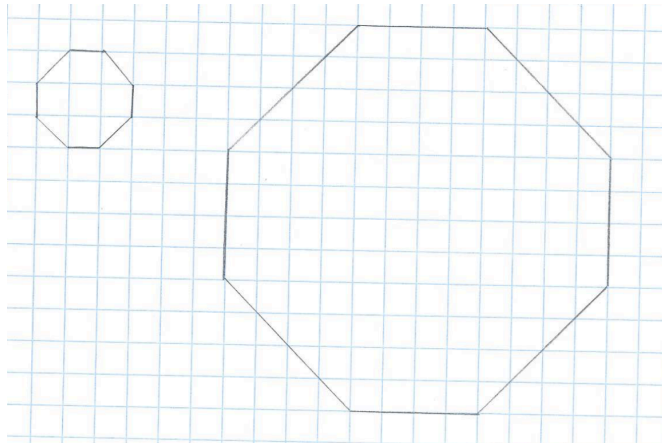


(f)

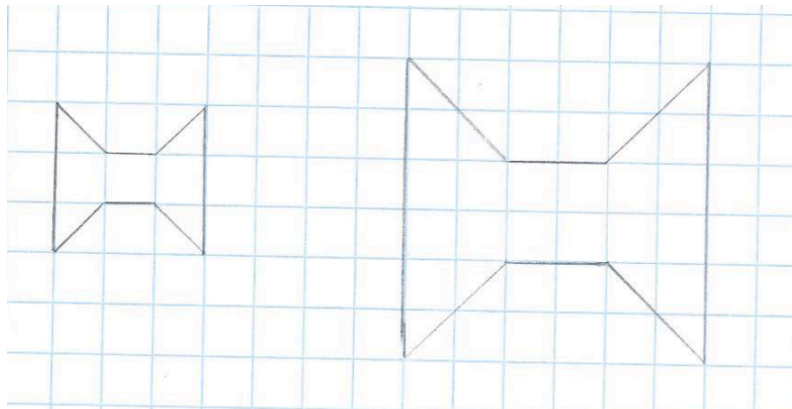


Question 3

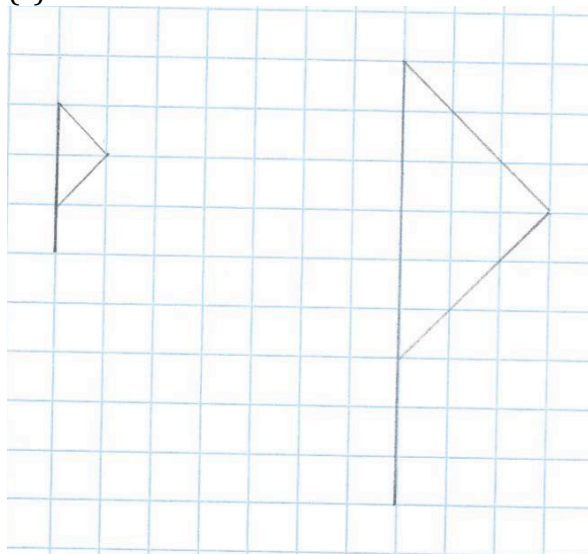
(a)



(b)



(c)



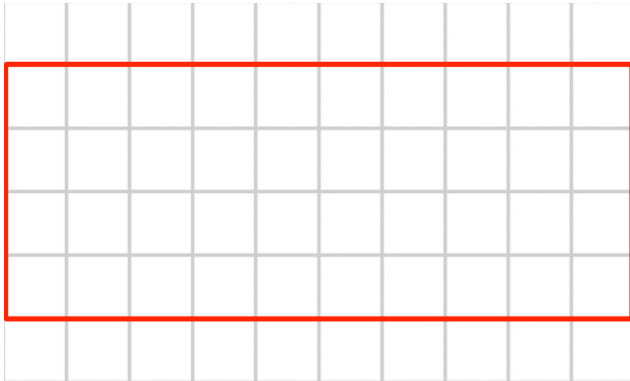
Question 4

- (a) Scale factor 3
- (b) Scale factor 2
- (c) Scale factor 5
- (d) Scale factor 2

**Apply**

Question 1

- (a)  $10\text{cm}^2$
- (b)



- (c)  $40\text{cm}^2$
- (d) 4 times bigger

Question 2

- (a)  $4.5\text{cm}^2$
- (b)

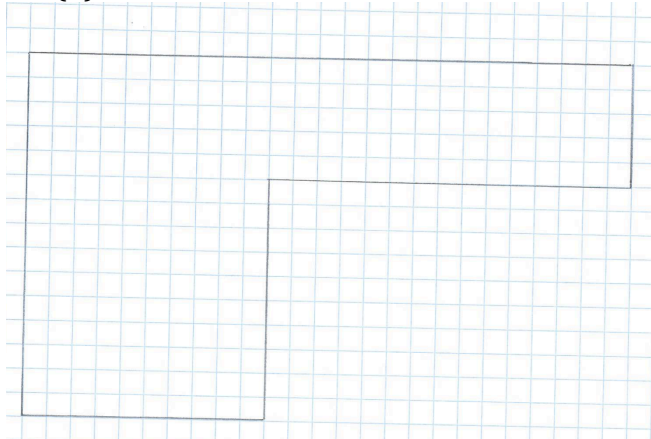


- (c)  $40.5\text{cm}^2$
- (d) 9 times bigger

Question 3

(a)  $225\text{cm}^2$

(b)



Question 4

Charlie has enlarged height by scale factor 2.5 instead of scale factor 2, and it is not in the correct position. He started by a scalene triangle and has not got an isosceles triangle, this should not happen.