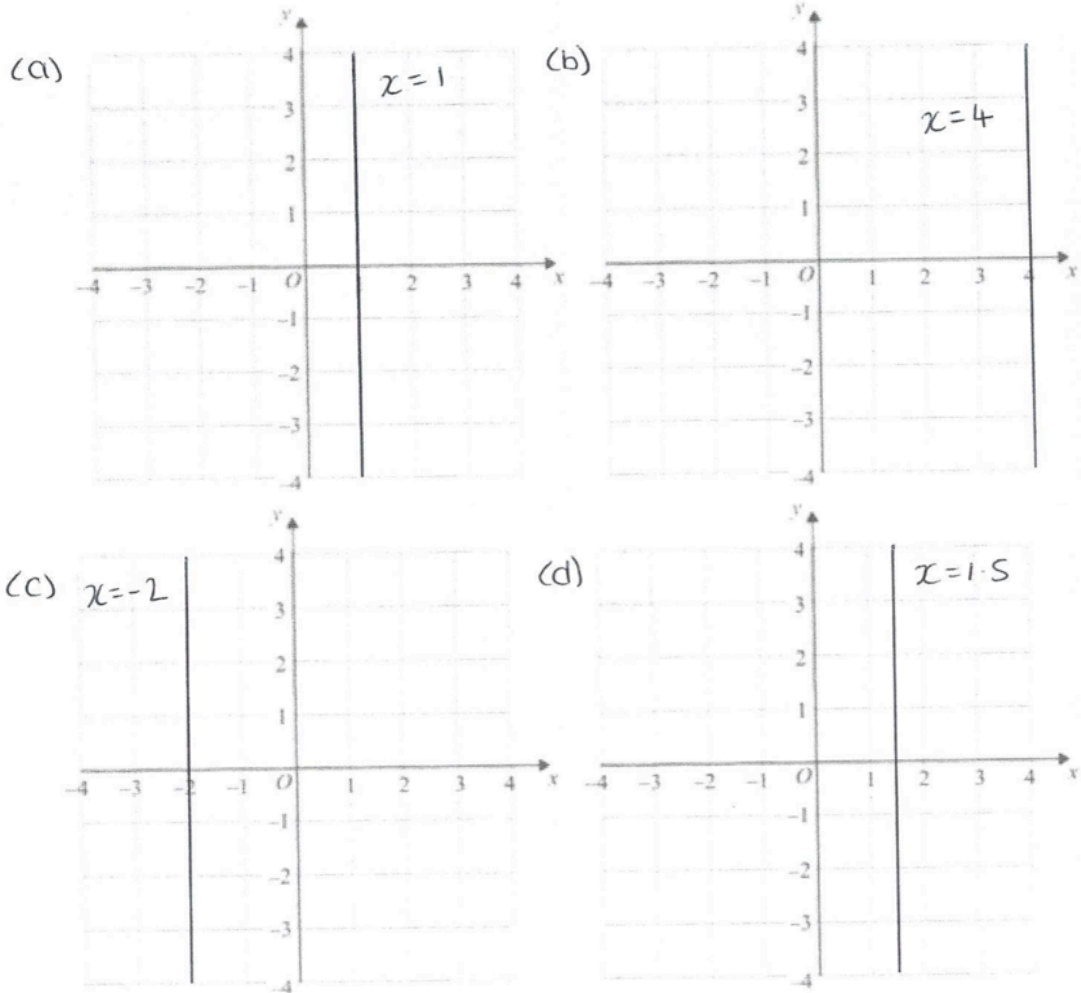


x= and y= Graphs Answers

Workout

Question 1:



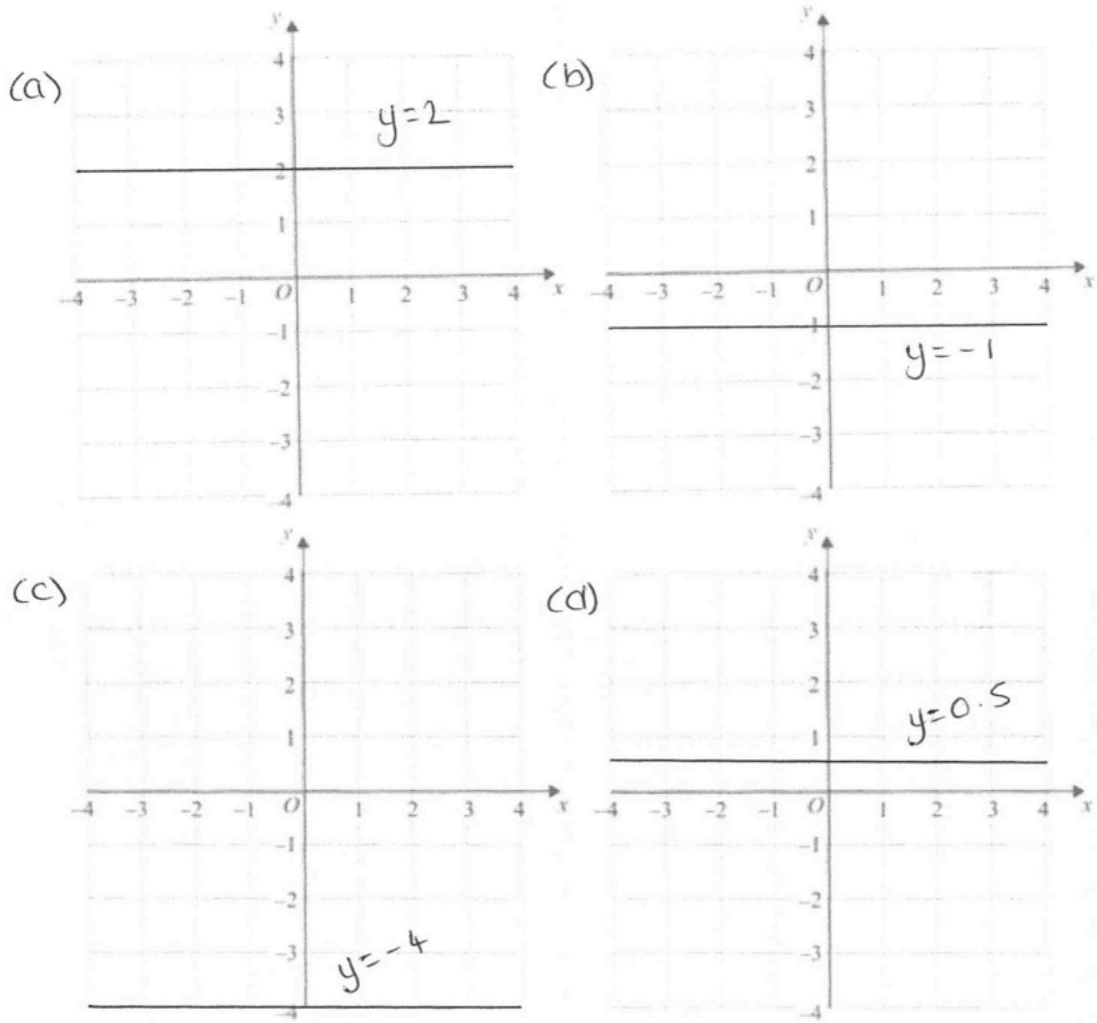
Question 2:

(a) $x = 2$

(b) $x = -3$

(c) $y = -2.5$

Question 3:



Question 4:

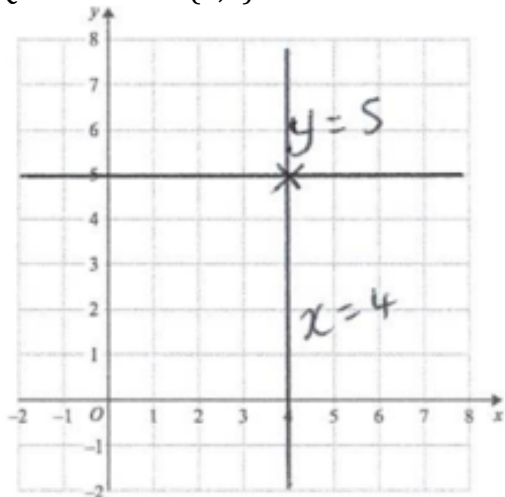
(a) $y = 1$

(b) $y = -2$

(c) $y = -3.5$

Apply

Question 1: (4,5)



Question 2:

(a) $y = 5$

(b) $x = 2$

(c) $x = -0.75$

Question 3:

(a) $(-1,2)$

(b) $(4,-1)$

(c) $(3,4)$

(d) $(4,-1)$

(e) $(6,0)$

(f) $(0,5)$

Question 4:

First graph: He has drawn $x = 1$ instead of $y = 1$

Second graph: He thinks that at the x - axis, $x = 0$. However, at the x - axis, $y = 0$.