

Conversion Graphs

Workout

Question 1

- (a) 2 hours
- (b) 4.5 hours
- (c) 60 miles
- (d) 210 miles

Question 2

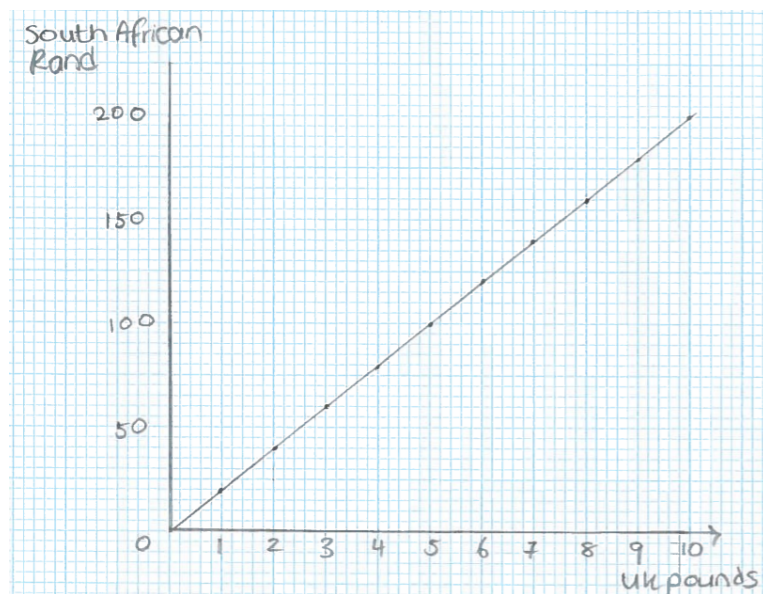
- (a) 100zl
- (b) 450zl
- (c) £60
- (d) £90
- (e) 250zl
- (f) 1000zl
- (g) £160

Question 3

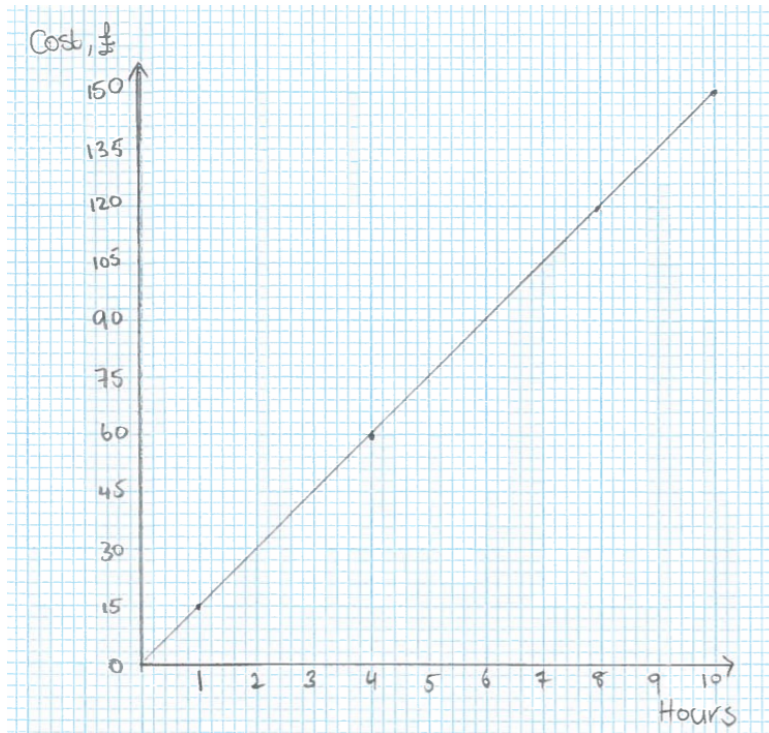
- (a) 8km
- (b) 1.6km
- (c) 3.8miles
- (d) 3 miles
- (e) 32km
- (f) 10 miles

Question 4

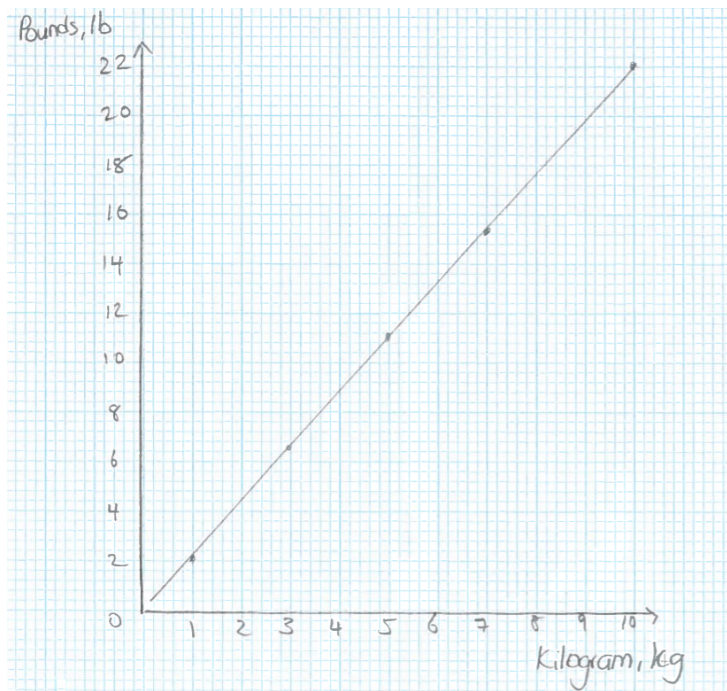
- (a)



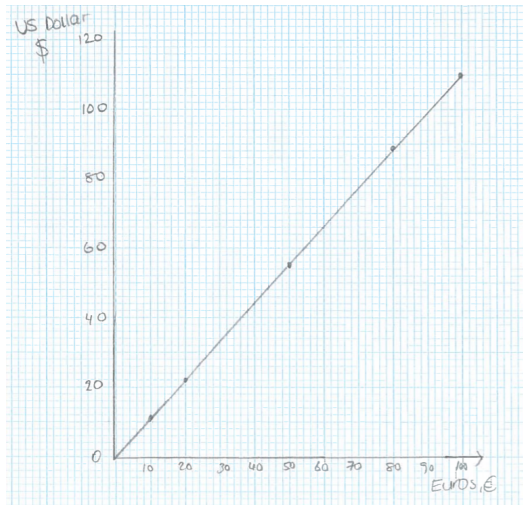
(b)



(c)



(d)



Apply

Question 1

£650

Question 2

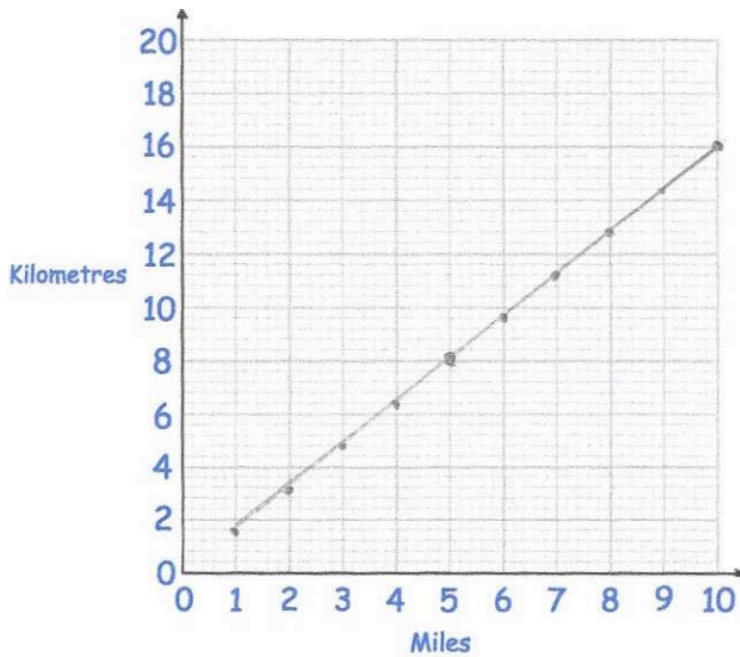
10 stone 3 pounds

Question 3

€1080

Question 4

(a)



(b) 37.5mph