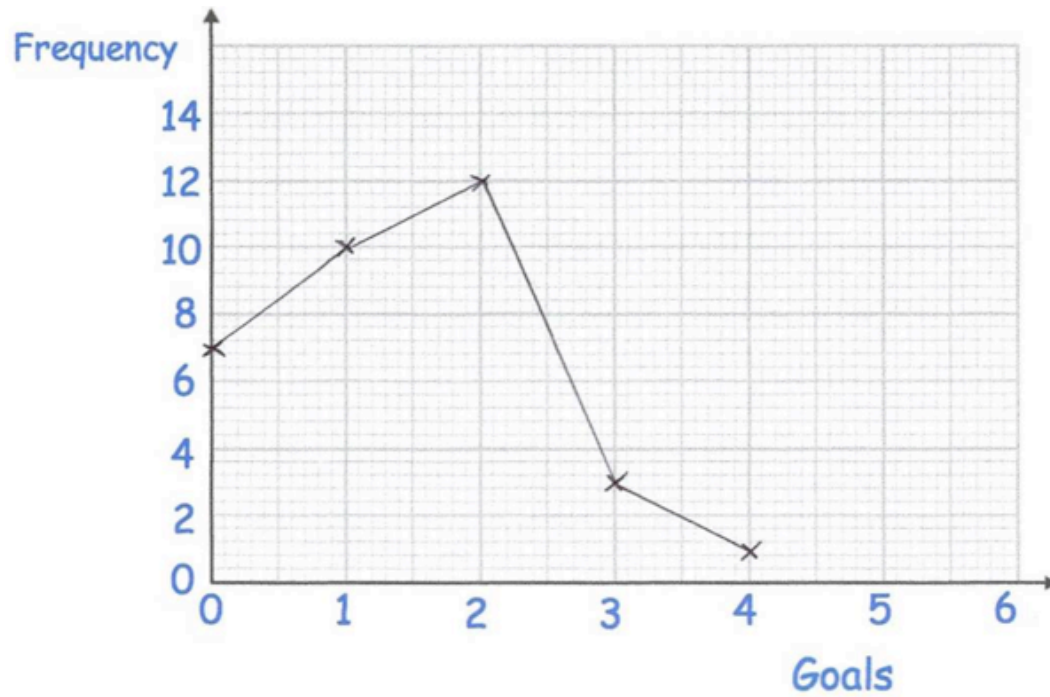


Frequency Polygons

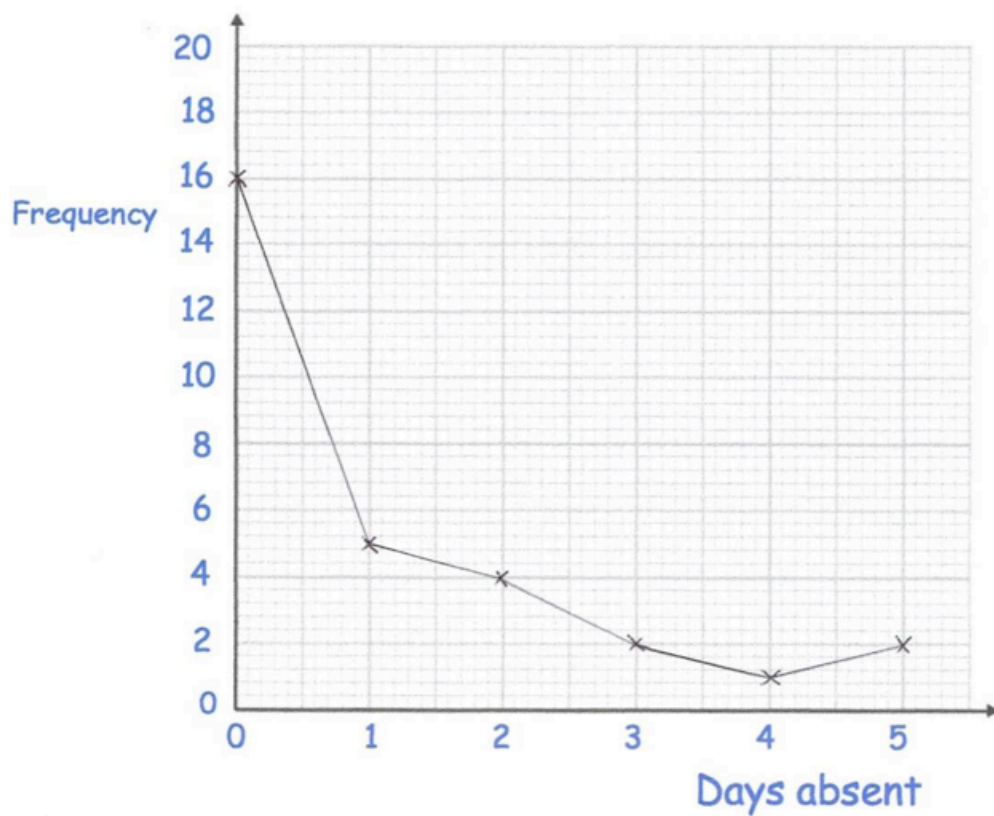
Workout

Question 1:

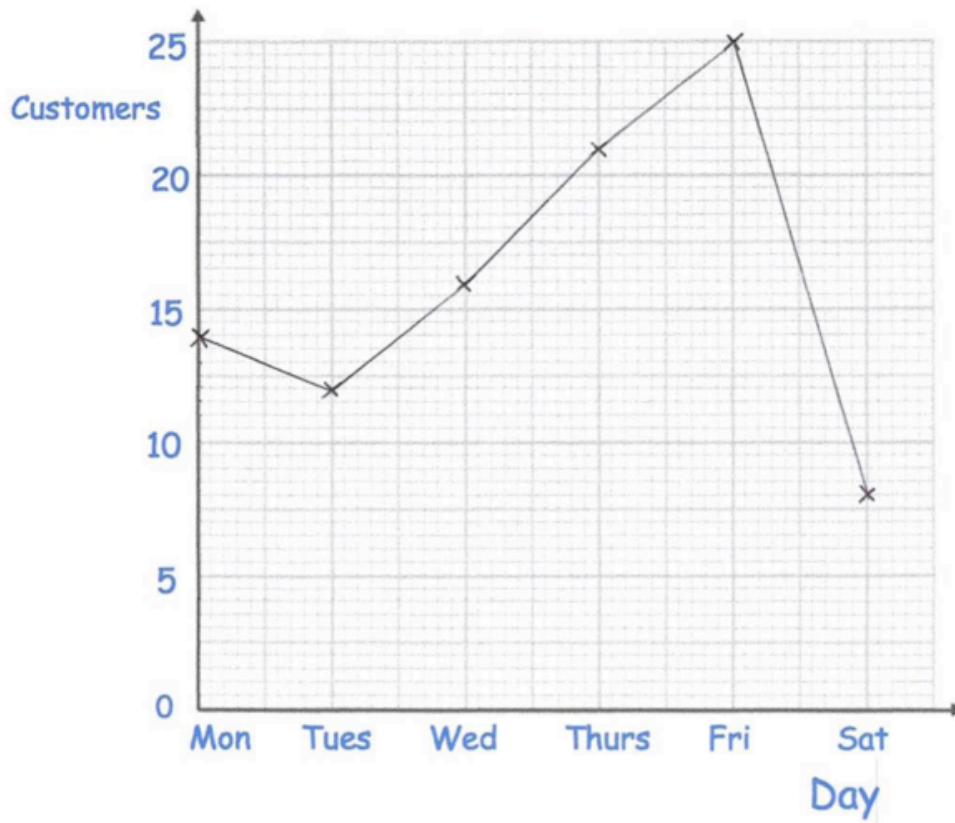
(a)



(b)

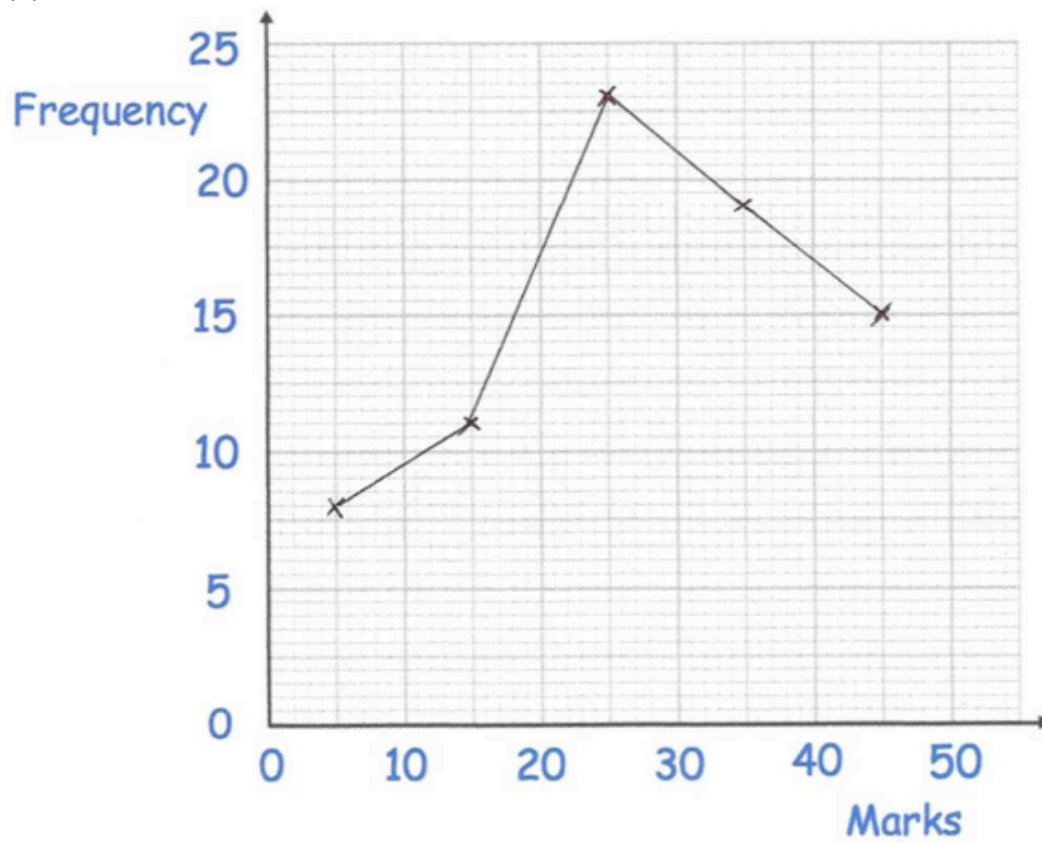


(c)

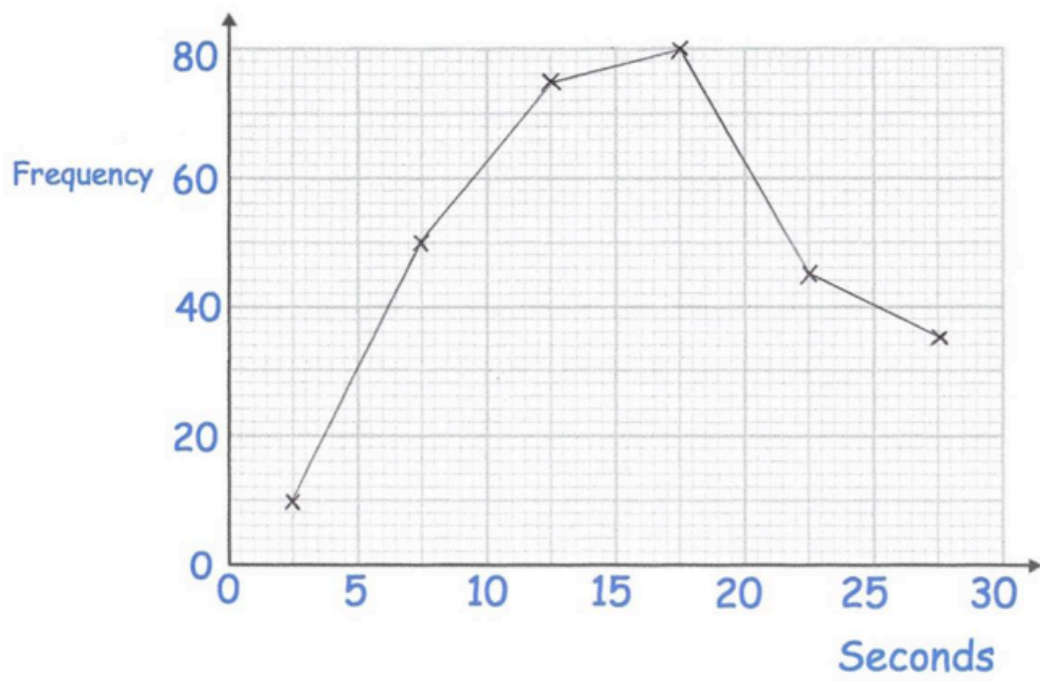


Question 2:

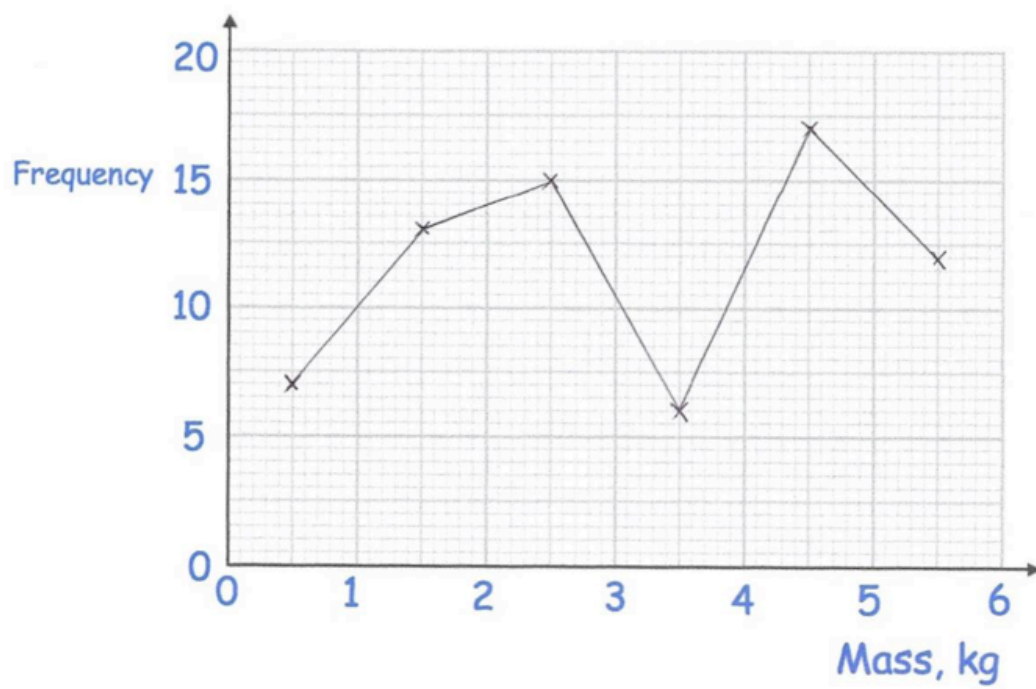
(a)



(b)



(c)



Question 3:

(a)

TVs owned	Frequency
0	5
1	30
2	41
3	12
4	13
5	1

(b)

Amount Withdrawn	Frequency
£10	30
£20	56
£30	52
£40	69
£50	52

Question 4:

(a)

Length, cm	Frequency
$0 < x \leq 10$	10
$10 < x \leq 20$	12
$20 < x \leq 30$	16
$30 < x \leq 40$	16
$40 < x \leq 50$	19

(b)

Weight, kg	Frequency
$8 < w \leq 12$	10
$12 < w \leq 16$	38
$16 < w \leq 20$	94
$20 < w \leq 24$	8

Apply

Question 1:

(a) 28

(b) 1

(c) 5

(d) 102

Question 2:

- (a) 6 (b) 5 (c) $\frac{13}{50}$ (d) 20% (e) 0.34

Question 3:

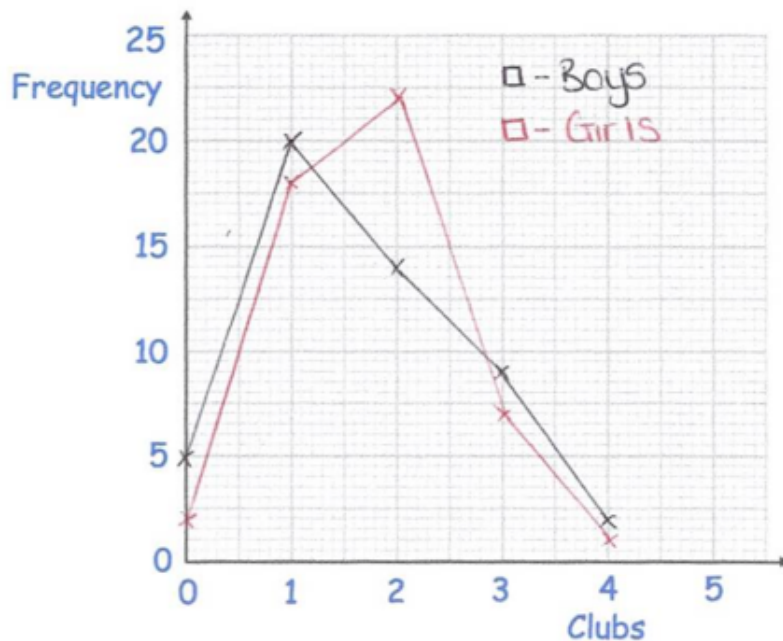
- (a) 1 (b) 1.4
- (c) He should use the mean as it takes into account every game (and it's higher)

Question 4:

The modal length of time for year 7's to spend on homework is 15 minutes compared to the modal time for year 11's which is a lot longer at 45 minutes. The least amount of time spent by a year 7 is only 5 minutes compared to the least amount time spent by a year 11 which is 15 minutes. The range of times taken by year 7's is 40 minutes which is larger than the range of times taken by year 11's which is 30 minutes.

Question 5:

(a)



(b)

Both boys and girls attend between 0 and 4 clubs. The modal number of clubs that boys attend is 1 whereas the modal number of clubs that girls attend is 2.

Question 6: 58 minutes