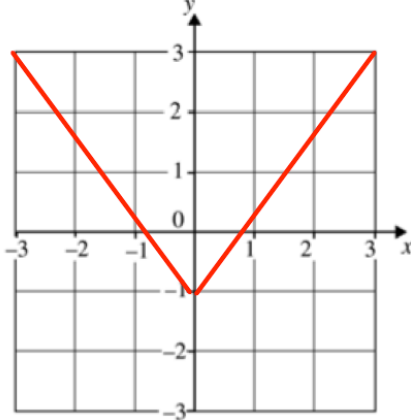
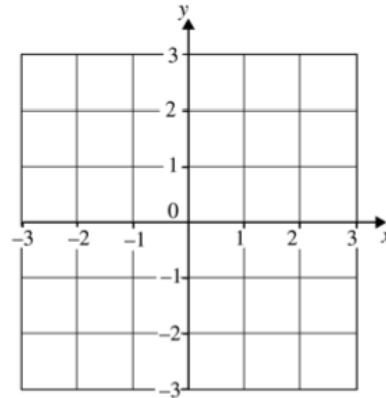


17th June



Corbettmaths

Shown is $f(x)$ Sketch the function $-f(x)$ Write 32 in the form 8^n

$$f(x) = \frac{kx + 2}{4}$$

$$g(x) = 2x + 5$$

$$\text{Given } fg(4) = -9.25$$

Work out the value of k Prove the angles in a triangle add up to 180° .

Hint: consider parallel lines.