

4th June

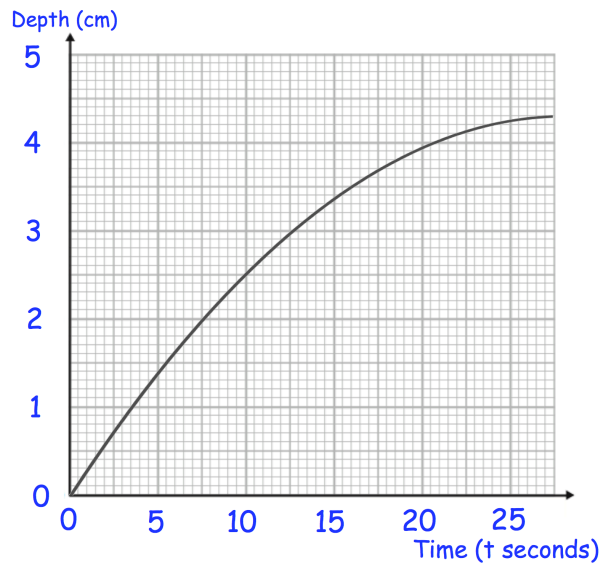


Corbettmaths

Which of these values cannot be the sine of an angle?

0      -0.9       $\frac{2}{3}$       1.2

Calculate an estimate for the gradient of the graph when  $t = 5$  seconds.



$$h(x) = 2x + 1$$

Find the value of  $a$  such that

$$h(a) = h^{-1}(a)$$

Find the set of values of  $x$  that satisfy both

$$2x - 6 > 6 - 6x$$

and

$$x^2 - 6x + 2 < 42$$