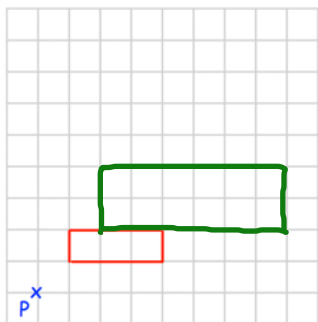


Workout

*There are templates for questions 1, 2 and 3 at the end of this exercise

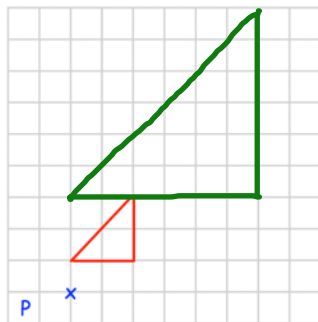
Question 1: Enlarge each shape by the scale factor given
Use P as the centre of enlargement.

(a)



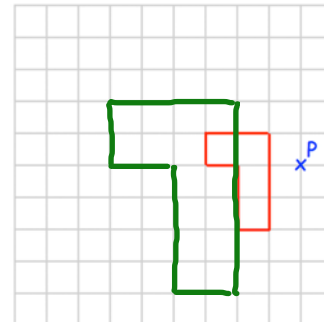
Enlarge by scale factor 2

(b)



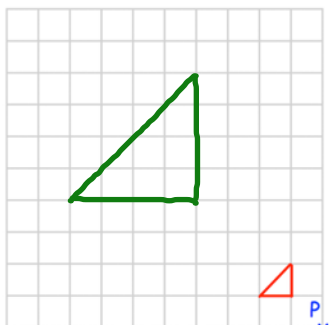
Enlarge by scale factor 3

(c)



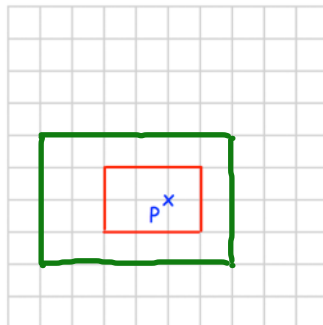
Enlarge by scale factor 2

(d)



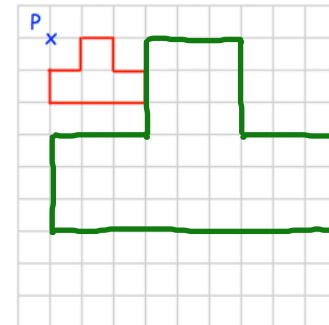
Enlarge by scale factor 4

(e)



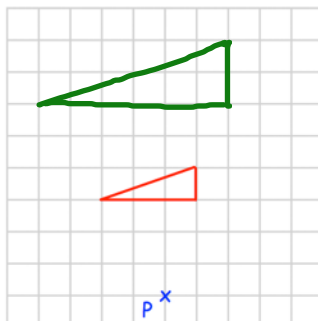
Enlarge by scale factor 2

(f)



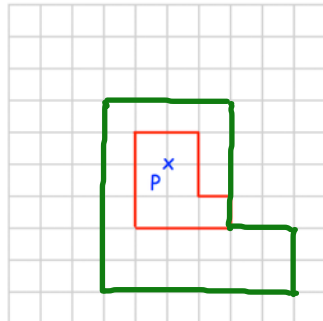
Enlarge by scale factor 3

(g)



Enlarge by scale factor 2

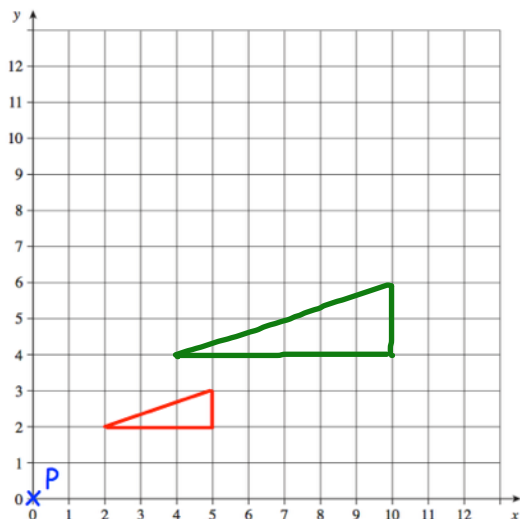
(h)



Enlarge by scale factor 2

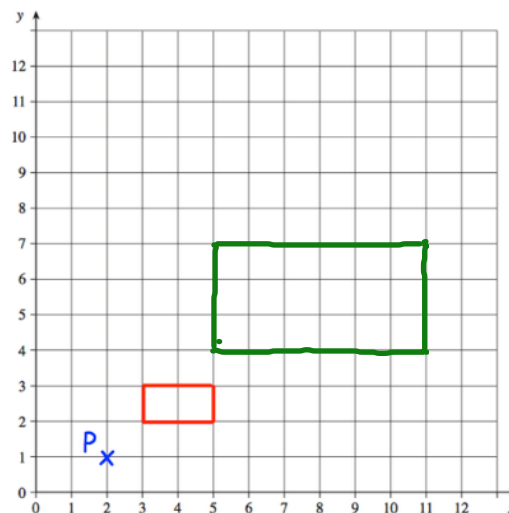
Question 2: Enlarge each shape by the scale factor given
Use P as the centre of enlargement.

(a)



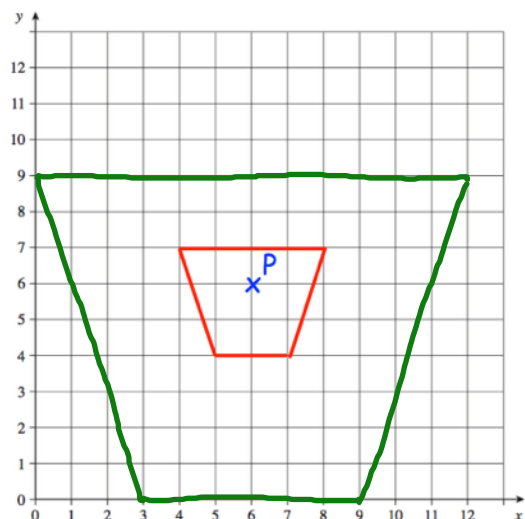
Enlarge by scale factor 2

(b)



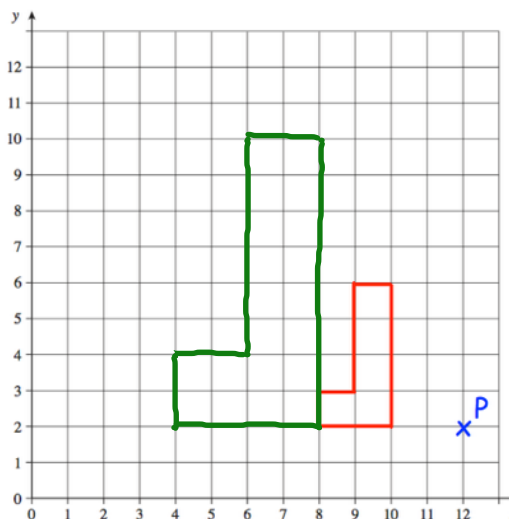
Enlarge by scale factor 3

(c)



Enlarge by scale factor 3

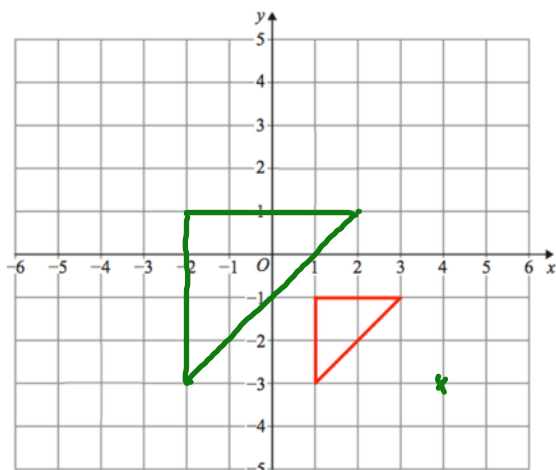
(d)



Enlarge by scale factor 2

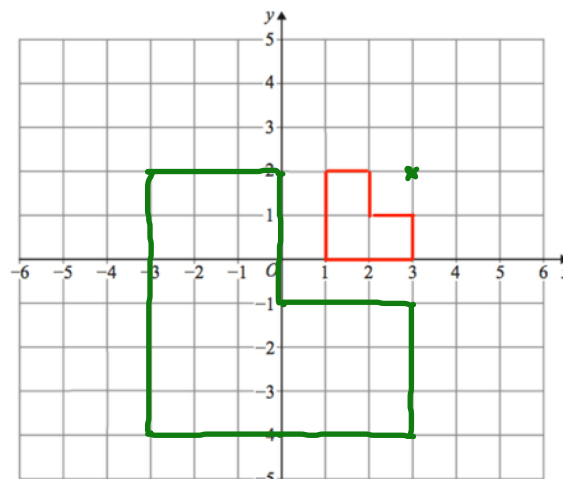
Question 3: Enlarge each shape by the scale factor given
The coordinates for each centre of enlargement are given.

(a)



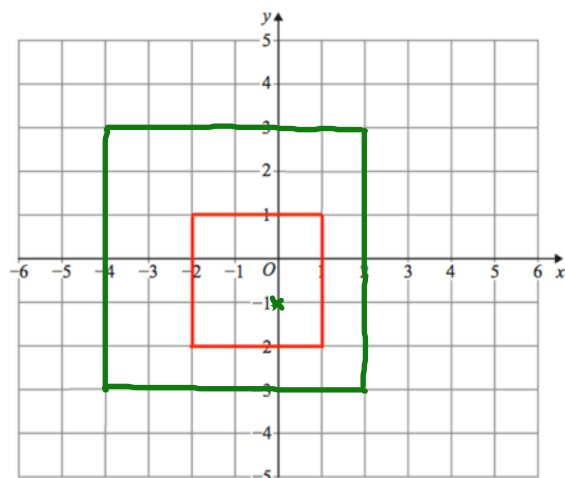
Enlarge by scale factor 2 using
(4, -3) as the centre of enlargement

(b)



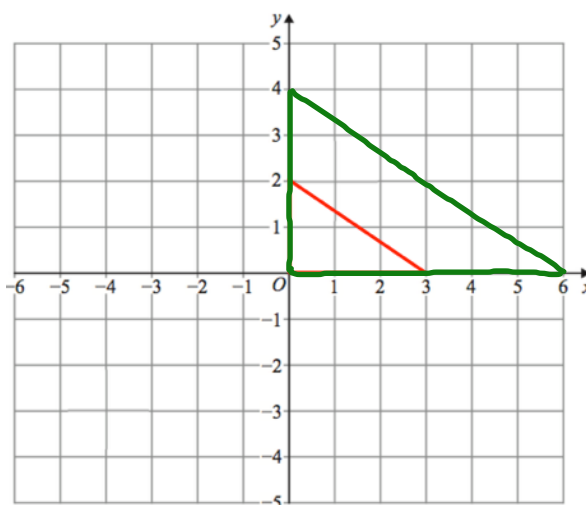
Enlarge by scale factor 3 using
(3, 2) as the centre of enlargement

(c)



Enlarge by scale factor 2 using
(0, -1) as the centre of enlargement

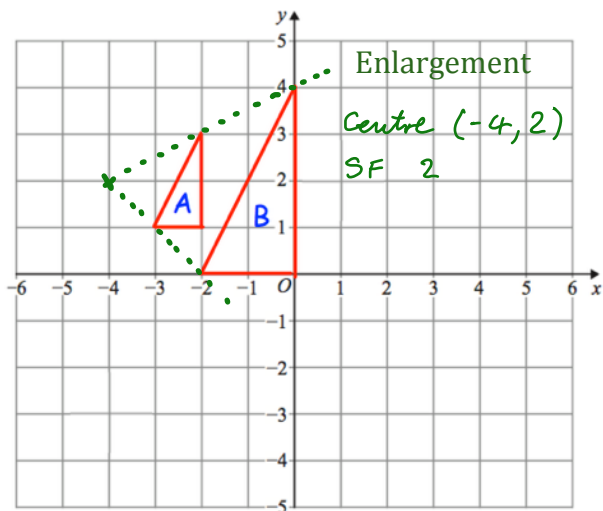
(d)



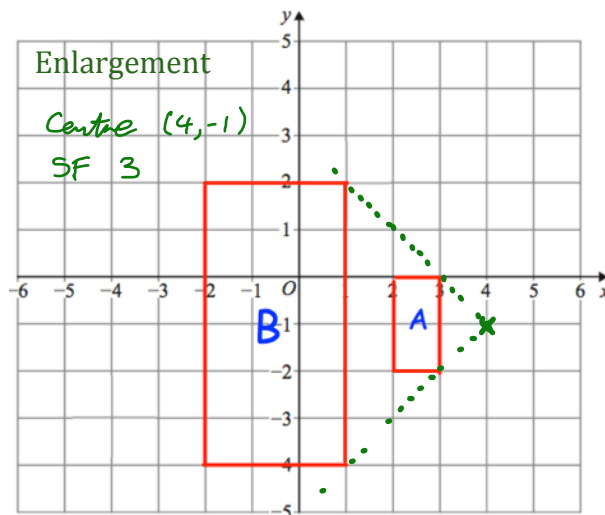
Enlarge by scale factor 2 using
the origin as the centre of enlargement

Question 4: Describe fully the single transformation that takes shape A to shape B.

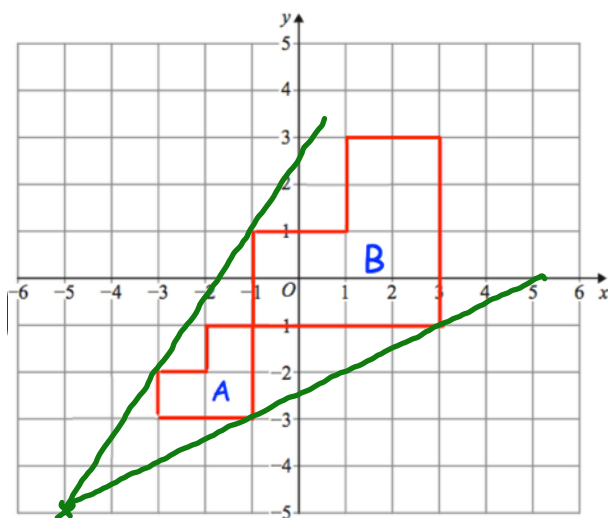
(a)



(b)



(c)



(d)

