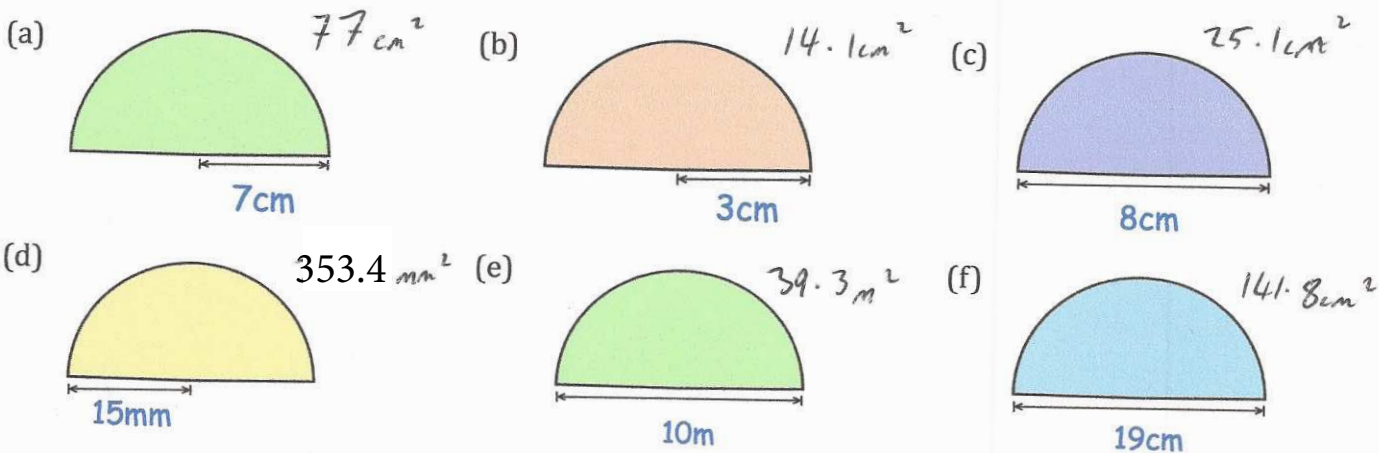
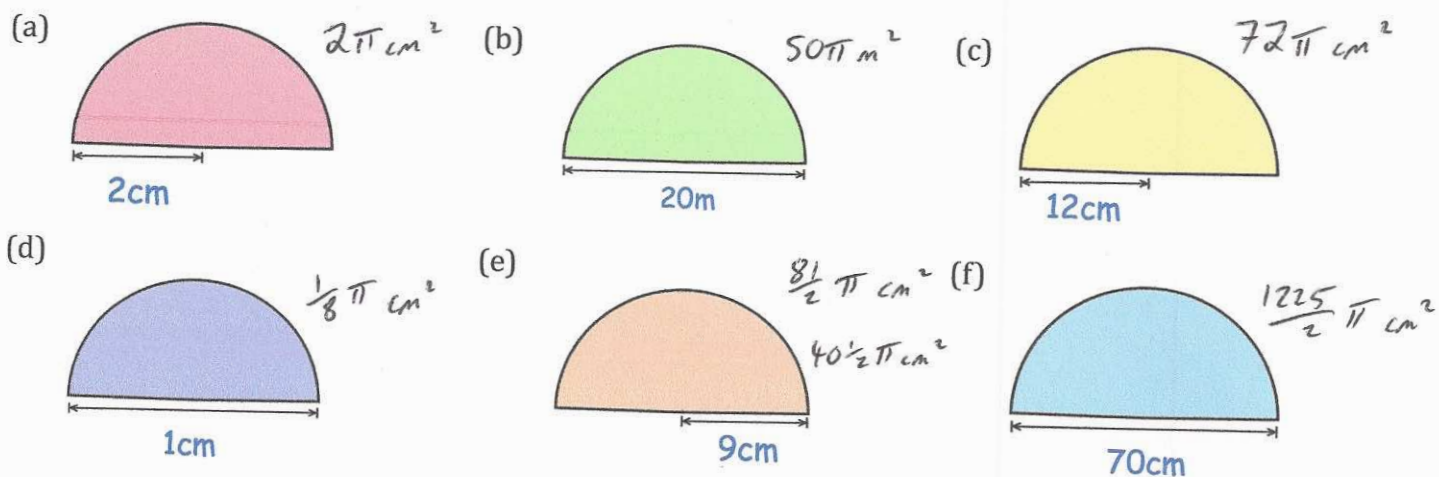


Workout

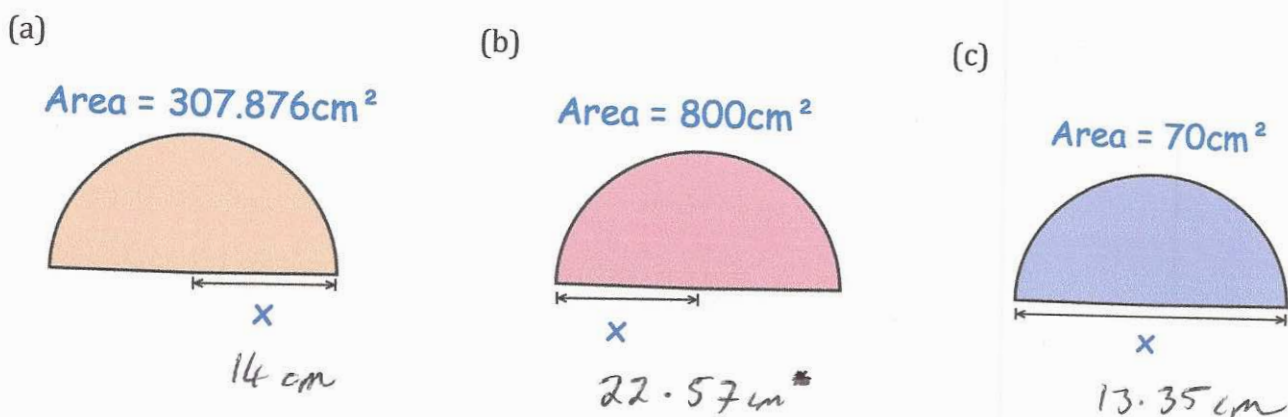
Question 1: Calculate the area of each of these semi-circles.
Give your answers to 1 decimal place and include suitable units.



Question 2: Work out the area of each of these semi-circles.
Give your answers in terms of π and include suitable units.

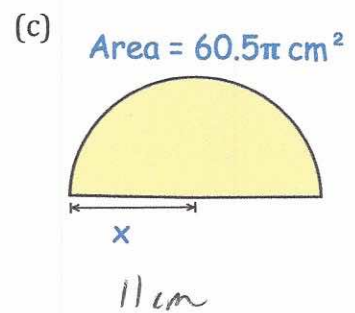
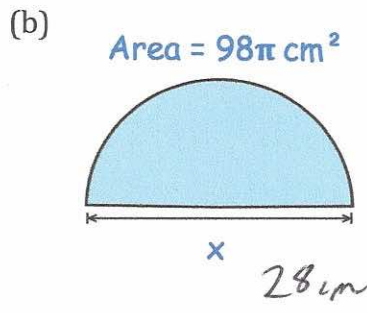
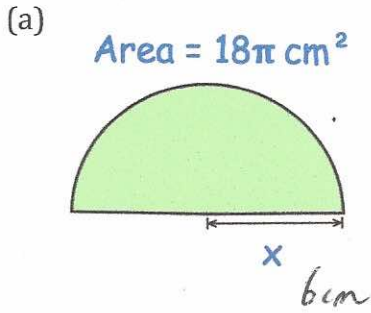


Question 3: Calculate the size of x .



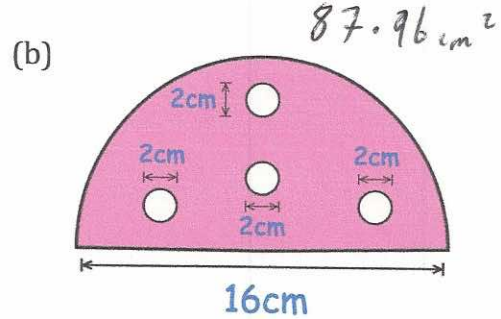
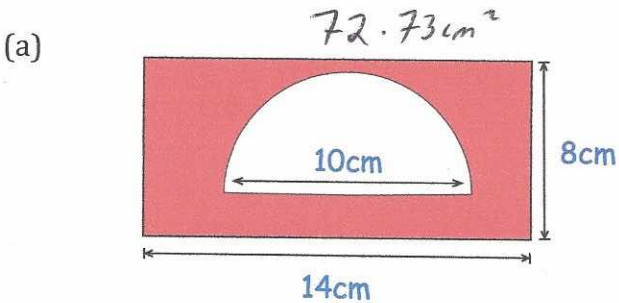
Area: Semi-circle
Video 47 on www.corbettmaths.com

Question 4: Work out the size of x.

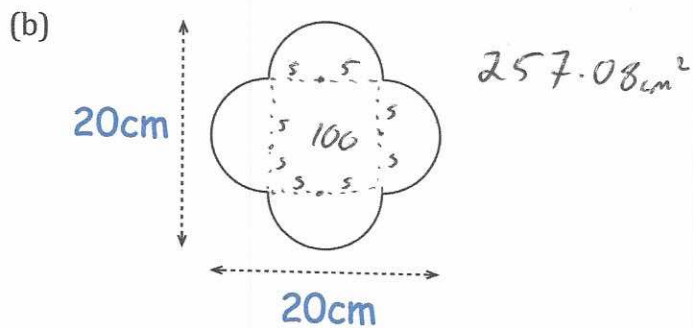
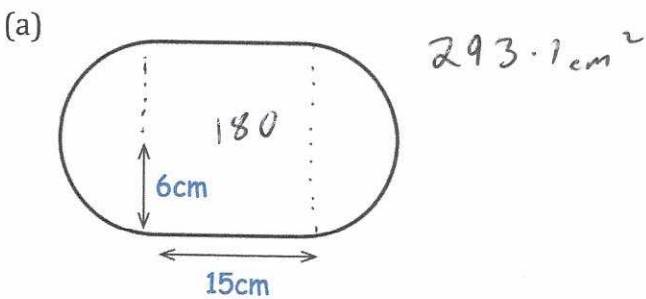


Apply

Question 1: Calculate the shaded area



Question 2: Calculate the area



Question 3: Farmer Jenkins is planting a crop in his semi-circular field. The seed costs £0.80 per square metre. When fully grown, Farmer Jenkins can sell the crop from 4 m^2 for £45. Calculate the profit he should make.

Cost = £502.66
 Sold for: £7068.60

 profit: £6565.94

