

Examples

Workout

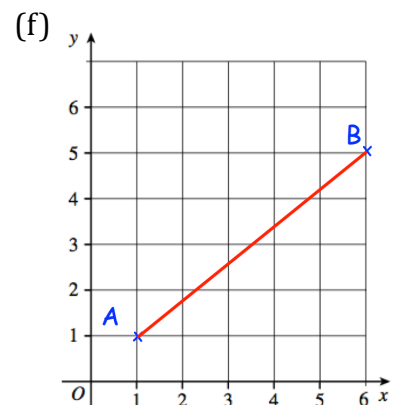
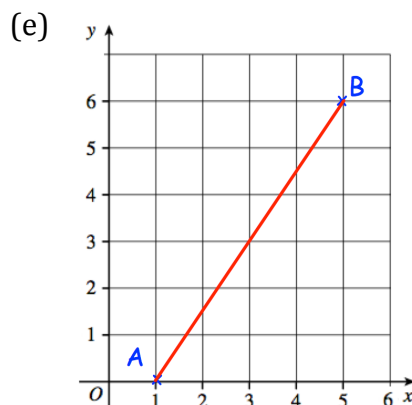
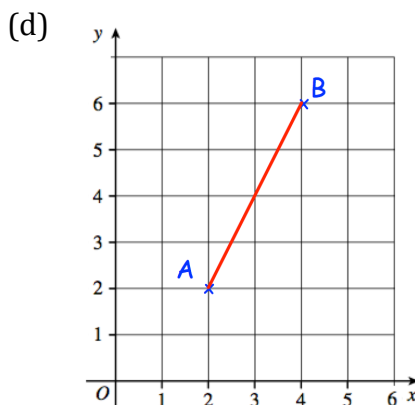
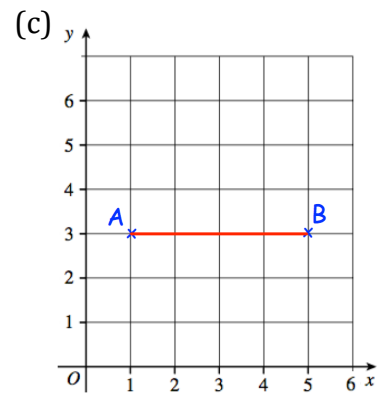
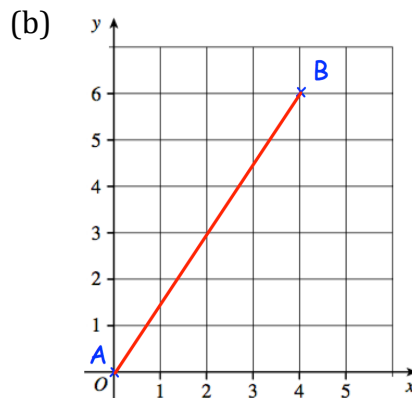
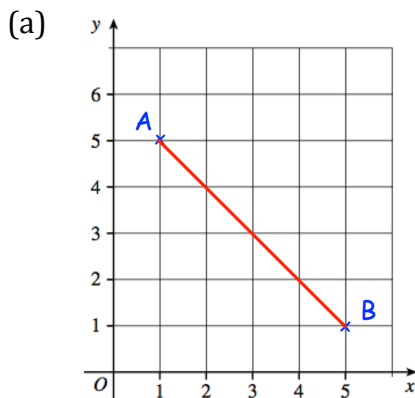


Click here

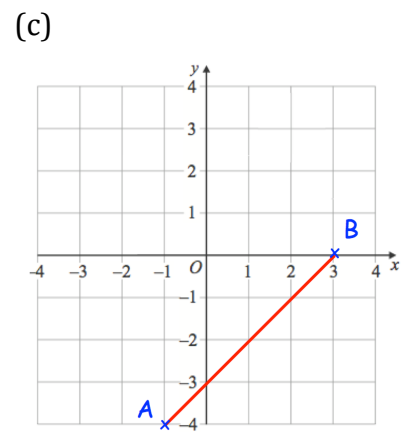
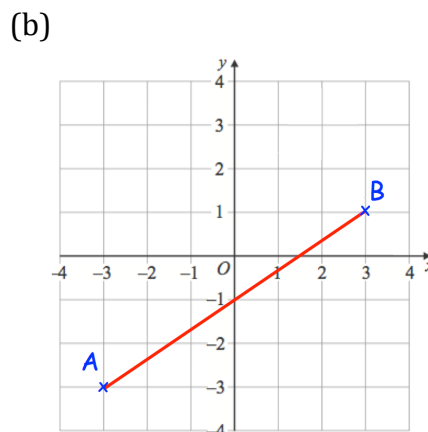
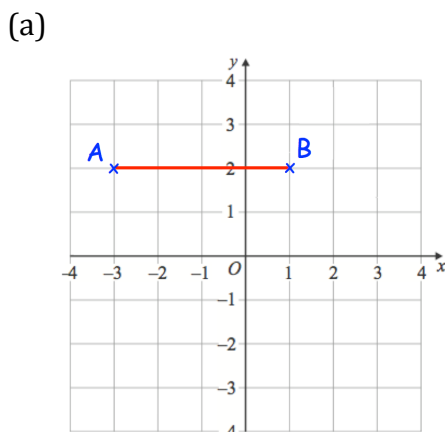


Scan here

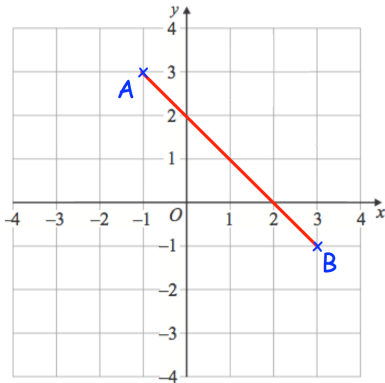
Question 1: Find the coordinates of the midpoints of the following line segments.



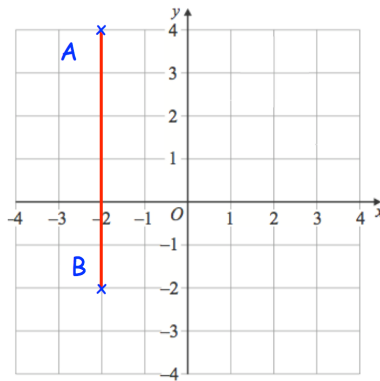
Question 2: Find the coordinates of the midpoints of the following line segments.



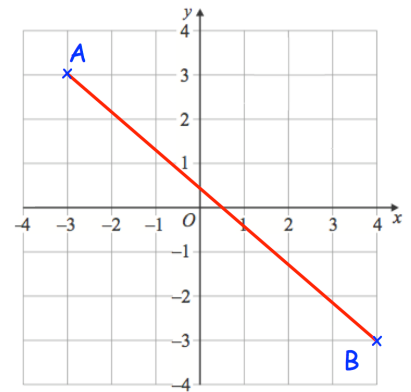
(d)



(e)



(f)



Question 3: Find the midpoint of the line joining these pairs of points

(a) (2, 4) and (6, 10)

(b) (1, 4) and (9, 12)

(c) (0, 7) and (6, 1)

(d) (-5, 2) and (5, -4)

(e) (-3, 9) and (7, -1)

(f) (0, -4) and (9, 0)

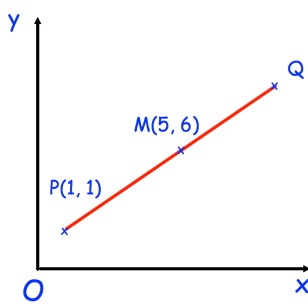
(g) (-10, -6) and (-2, 8)

(h) (0, 5) and (-11, -10)

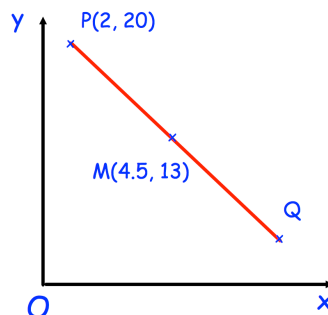
(i) (9, 8) and (4, 8)

Question 4: M is the midpoint of PQ in each diagram below.
Find the coordinates of Q in each diagram.

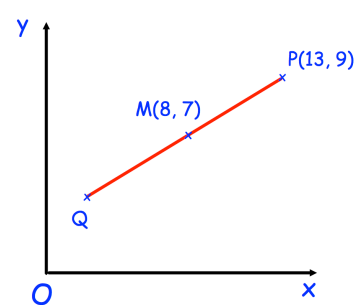
(a)



(b)

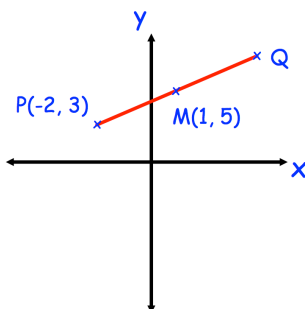


(c)

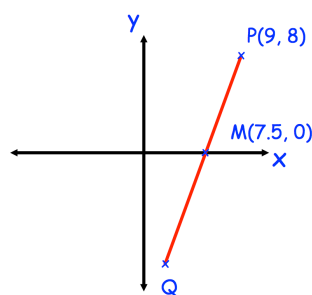


Question 5: M is the midpoint of PQ in each diagram below.
Find the coordinates of Q in each diagram.

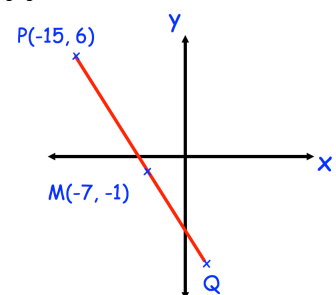
(a)



(b)



(c)

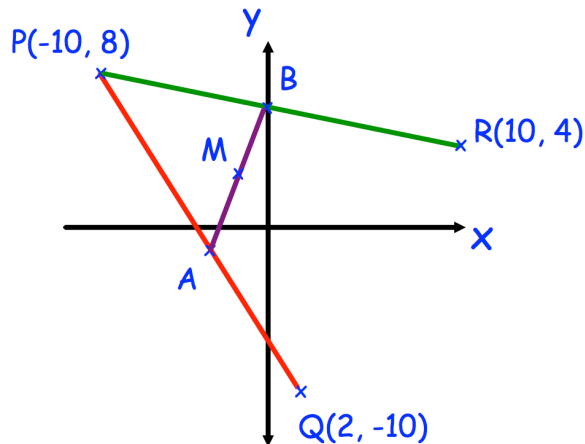


Midpoint Between Two Coordinates

Videos 87, 198 on www.corbettmaths.com

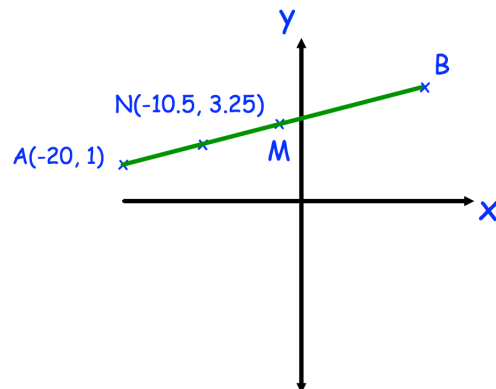
Apply

- Question 1: A is the midpoint of the line PQ.
 B is the midpoint of the line PR.
 M is the midpoint of the line AB.
 Find the coordinates of the point M

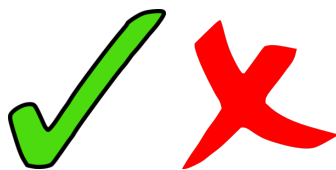


- Question 2: M is the midpoint of the line AB.
 The coordinates of the point M are (7, 2)
 The coordinates of the point B are (11, 8)
 The coordinates of the point C are (7, -4)
 Find the area of triangle ACM.

- Question 3: M is the midpoint of AB.
 N is the midpoint of AM.
 Find the coordinates of the point B.



Answers



Click here



Scan here