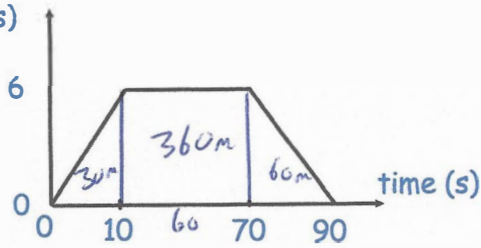


17th February



Corbettm0ths

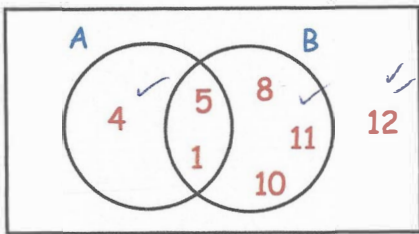
speed (m/s)



Calculate the total distance travelled.

$$30 + 360 + 60 = 450m$$

ξ

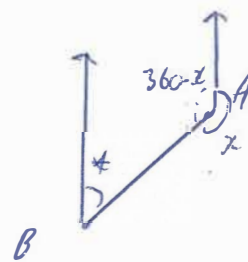


$P(A' \cup B')$

$$\frac{5}{7}$$

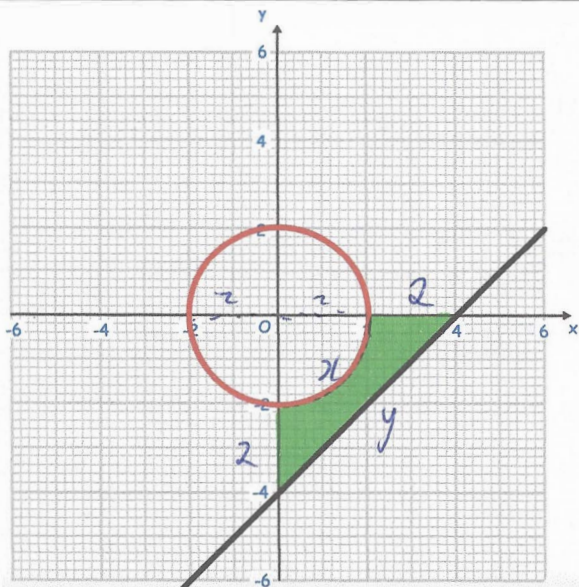
The bearing of A to B is x .
 x is greater than 180° .

Show the bearing of B to A is $(x - 180)^\circ$



$$* + (360 - x) = 180$$

$$* = x - 180^\circ$$



Find the perimeter of the shaded region.

$$4^2 + 4^2 = 32$$

$$y = \sqrt{32}$$

$$x = \frac{1}{4} \times \pi \times 4$$

$$= \pi$$

$$P = 2 + 2 + \pi + \sqrt{32}$$

$$= 12.798 \dots$$