

6th August



Corbettmaths

Evaluate

$$36^{\frac{1}{2}}$$

6

Solve $2x^2 + 5x - 12 = 0$

$$(2x - 3)(x + 4) = 0$$

$$x = \frac{3}{2} \text{ or } x = -4$$

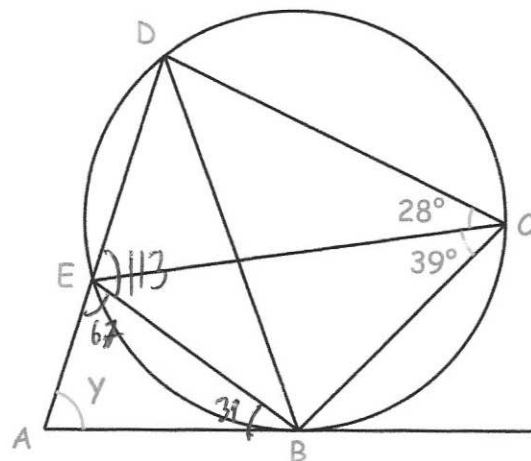
Shown below is cyclic quadrilateral

BCDE

AB is a tangent to the circle.

AED is a straight line.

Work out the size of angle y.



74°

Describe fully the single transformation that maps shape A onto shape B

Enlargement, sf -2
centre (2, 2)

