

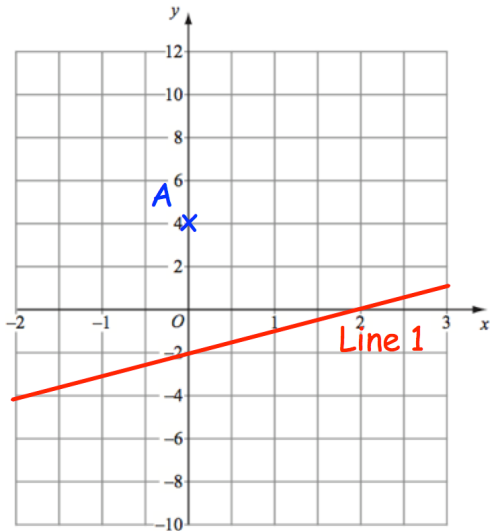
1st July



Corbettmaths

Arrange the following in order, smallest first

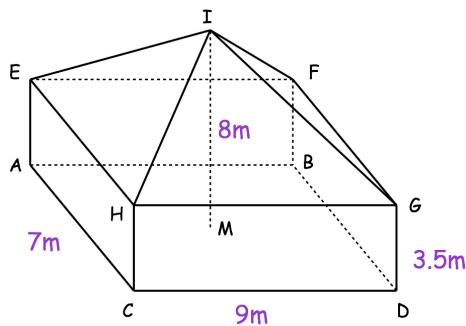
$25^{-\frac{1}{2}}$ $\left(\frac{2}{3}\right)^{-2}$ $0.\dot{1}$



Write down the equation of the line perpendicular to Line 1 and passing through A.

Find the shortest distance between Line 1 and A.

The diagram shows a cuboid and a pyramid.
The apex I is directly above the centre M, of ABCD.



Calculate the angle between EHI and ACEH