

4th August



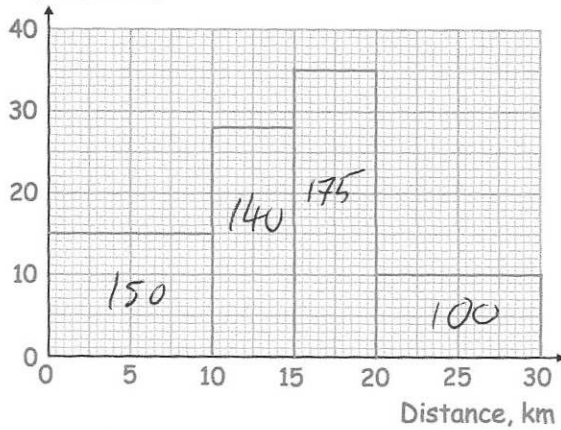
Corbettmaths

Harry has rounded a number to 10 to one significant figure.

Write down the upper bound and lower bound.

LB : 9.5
UB : 15

Frequency Density



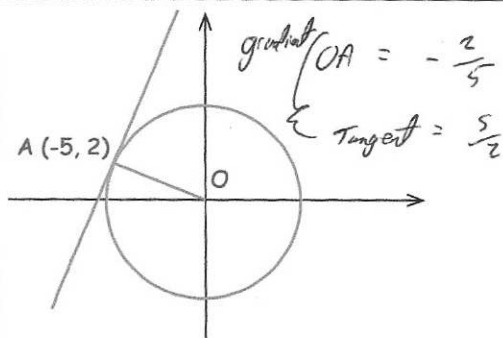
Hannah surveyed students on how far they travel to college

How many students did Hannah survey?

565

Calculate an estimate of the mean distance travelled

Distance	frequency	fx	
0-10	150	750	$8062.5 \div 565$ 14.27 km
10-15	140	1750	
15-20	175	3062.5	
20-30	100	2500	
		<u>8062.5</u>	



The diagram shows the circle $x^2 + y^2 = 29$ with a tangent at the point $(-5, 2)$

Find the equation of the tangent

$y = \frac{5}{2}x + c$
 $2 = -\frac{25}{2} + c$
 $c = 14.5$
 $y = 2.5x + 14.5$

The tangent crosses the x-axis at the point B and the y-axis at the point C

Find the length BC $(0, 14.5)$
 $(-5.8, 0)$

15.617