

12th June



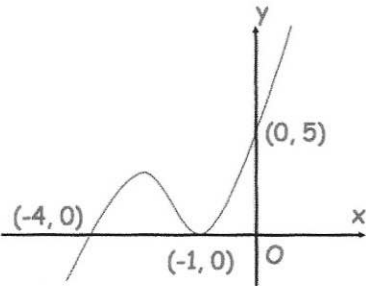
Corbettmaths

Which of these values cannot be the cosine of an angle?

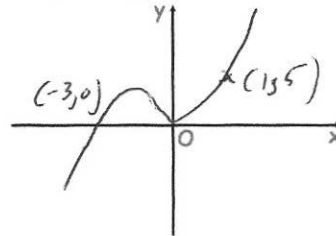
-1 3 0.7 -0.04

Shown below is the curve with equation $y = f(x)$.

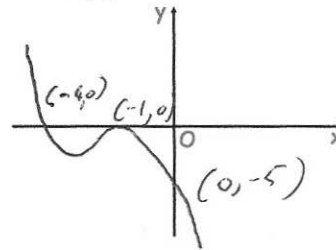
The curve passes through the points $(-4, 0)$, $(-1, 0)$ and $(0, 5)$



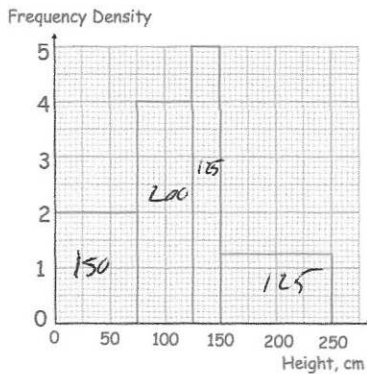
Sketch $y = f(x - 1)$



Sketch $y = -f(x)$



The heights of some sunflowers are represented in a histogram. 600



Find an estimate of the interquartile range.

LQ_1 (150th)
75 cm

UQ_3 (450th)
 $125 + \frac{100}{125} \times 25$
 $= 145$

$$145 - 75 = 70 \text{ cm}$$