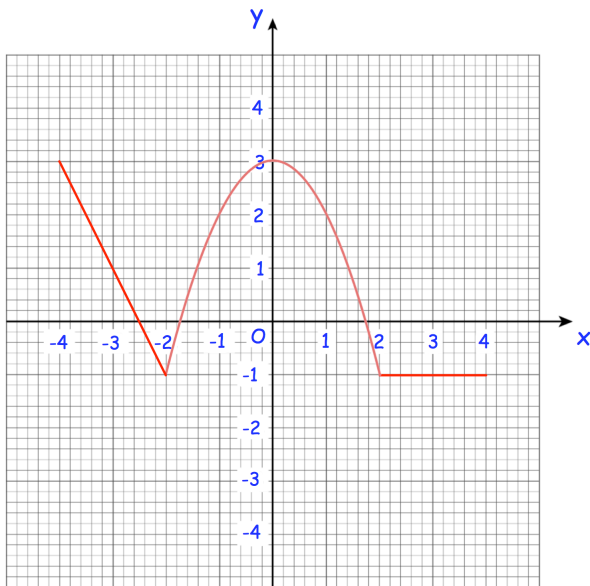


10th December

Corbettmaths



Define $f(x)$, stating clearly the domain for each part.

The curve C has equation
 $y = 3x^4 - 12x^3 + 2$

Find $\frac{dy}{dx}$

Find $\frac{d^2y}{dx^2}$

Show that C has a stationary point when $x = 3$ and state the nature of this stationary point