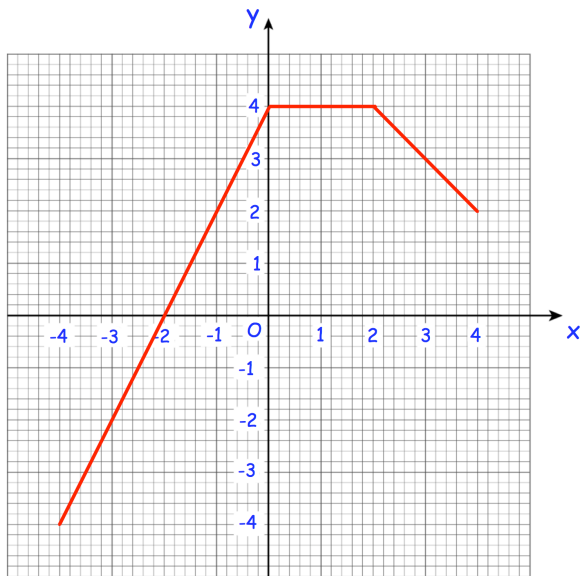


7th January



Corbettmaths



Define $f(x)$, stating clearly the domain for each part.

Solve $8\sin\theta - 3 = 0$ for
 $0^\circ \leq \theta \leq 360^\circ$

Rationalise and simplify $\frac{17\sqrt{3} + 5\sqrt{5}}{2\sqrt{3} - \sqrt{5}}$

Prove $\tan\theta\cos\theta \equiv \sin\theta$