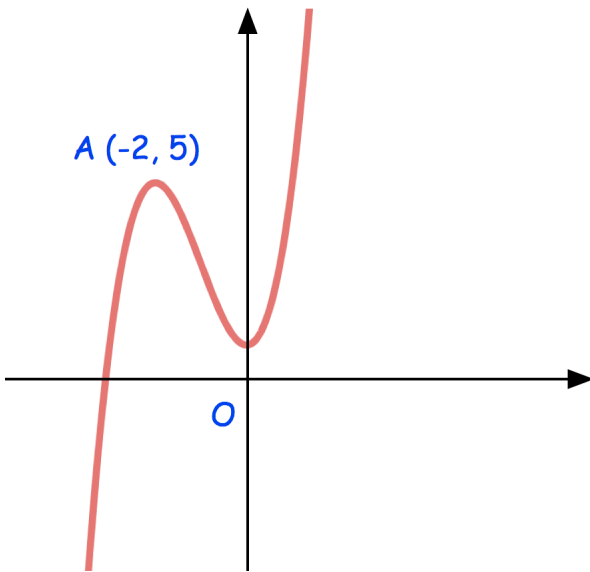


26th May

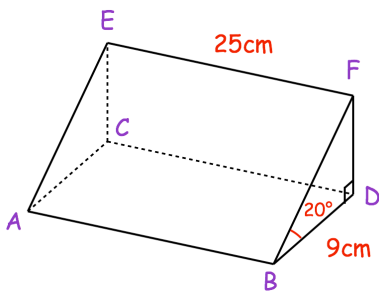


Corbettmaths



Write down the equation of the tangent to the curve at A

Write down the equation of the normal to the curve at A



Work out the size of angle CBE

The transformation matrix $\begin{pmatrix} -a & 2b \\ -8b & 3a \end{pmatrix}$ maps the point $(-1, -2)$ onto the point $(-12, 32)$

Find the values of a and b