

Name: \_\_\_\_\_

5-a-day

Foundation Plus

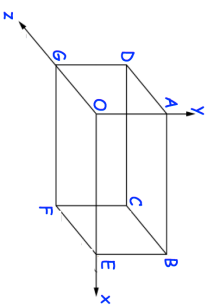
19th April

Write 53000000000 in standard form.

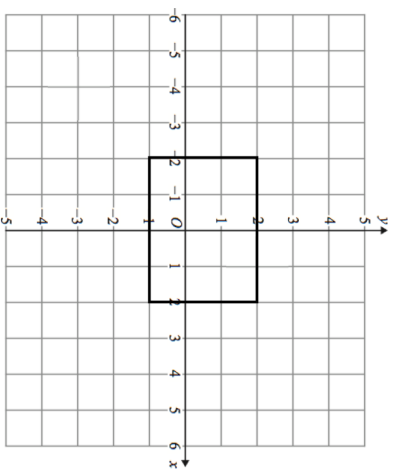


Write  $6.24 \times 10^{-4}$  as an ordinary number.

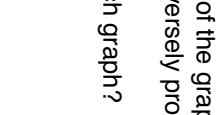
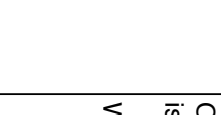
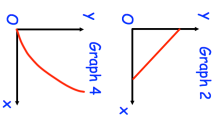
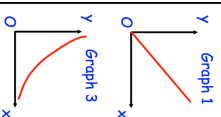
This diagram shows a cuboid drawn on a 3D grid. C has coordinates (5, 2, 3).



Write down the coordinates of the point F.



Enlarge the rectangle by scale factor  $\frac{1}{2}$ , using centre of enlargement (6, 0).



One of the graphs could show that y is inversely proportional to x.  
Which graph?

Name: \_\_\_\_\_

5-a-day

Foundation Plus

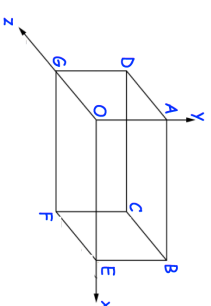
19th April

Write 53000000000 in standard form.

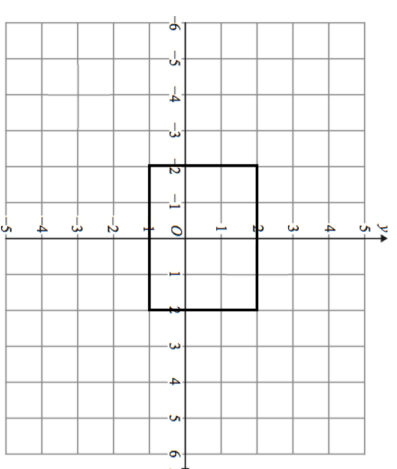


Write  $6.24 \times 10^{-4}$  as an ordinary number.

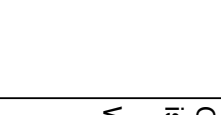
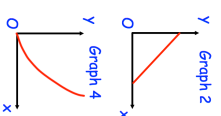
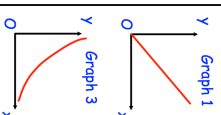
This diagram shows a cuboid drawn on a 3D grid. C has coordinates (5, 2, 3).



Write down the coordinates of the point F.



Enlarge the rectangle by scale factor  $\frac{1}{2}$ , using centre of enlargement (6, 0).



One of the graphs could show that y is inversely proportional to x.  
Which graph?