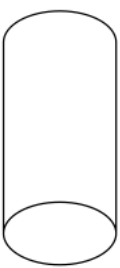


Name: _____

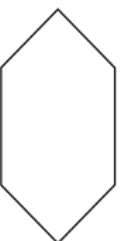
5-a-day

Numeracy

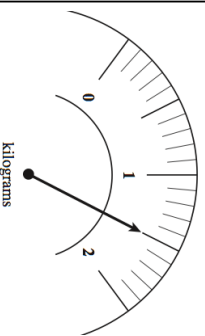
27th August



Name _____



Name _____



There are 135 pupils in Year 9 at a school

$\frac{2}{5}$ of these students are blonde.

How much flour is on the scale?
Give your answer in kilograms.
Give your answer in grams.

How many students are blonde?

Write 34.8 correct to the nearest whole number.

Write 6.3 correct to the nearest whole number.

A bus leaves Bristol at 10:05 and arrives in Birmingham at 12:40.

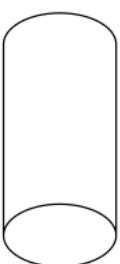
How long does the journey last?

Name: _____

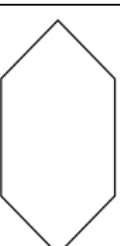
5-a-day

Numeracy

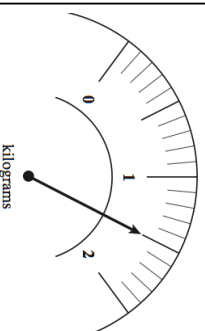
27th August



Name _____



Name _____



There are 135 pupils in Year 9 at a school

$\frac{2}{5}$ of these students are blonde.

How much flour is on the scale?
Give your answer in kilograms.
Give your answer in grams.

How many students are blonde?

Write 34.8 correct to the nearest whole number.

Write 6.3 correct to the nearest whole number.

A bus leaves Bristol at 10:05 and arrives in Birmingham at 12:40.

How long does the journey last?