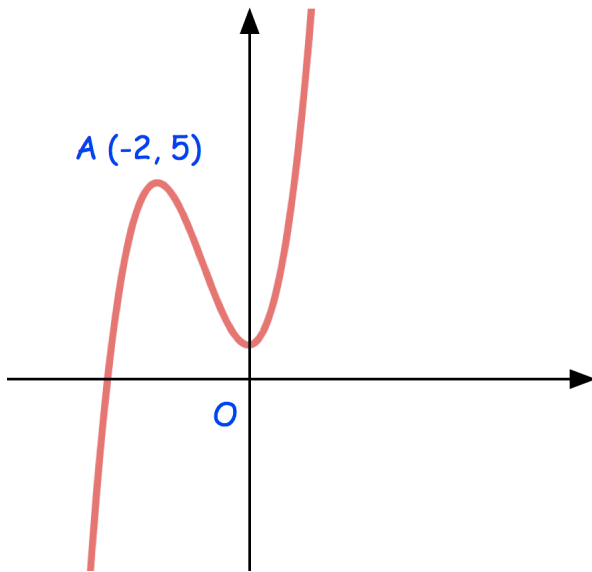


15th August



Corbettmaths



Write down the equation of the tangent to the curve at A

Write down the equation of the normal to the curve at A

Use the factor theorem to show that $(2x - 3)$ is a factor of $2x^3 + x^2 - 12x + 9$

Hence, factorise fully $2x^3 + x^2 - 12x + 9$

Solve $-5\cos x = 9\sin x$

for $0^\circ \leq x \leq 360^\circ$